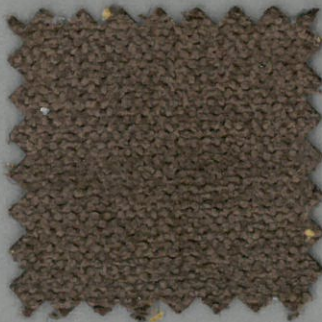
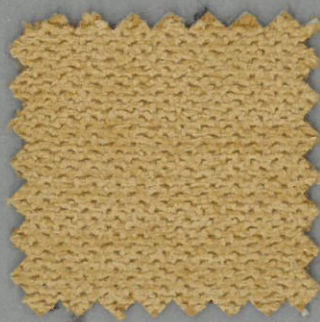


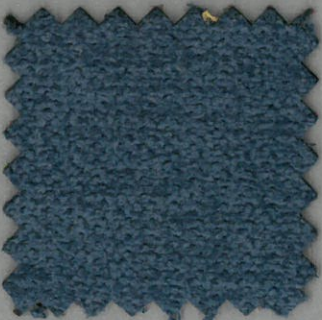
2



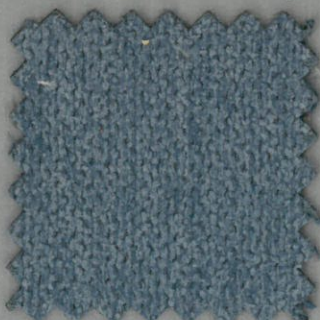
12



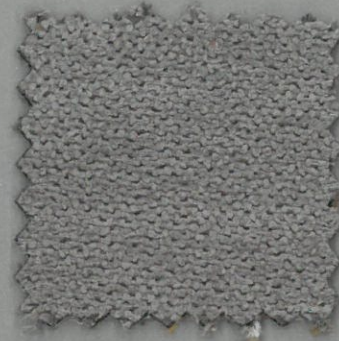
15



18



19



3



4



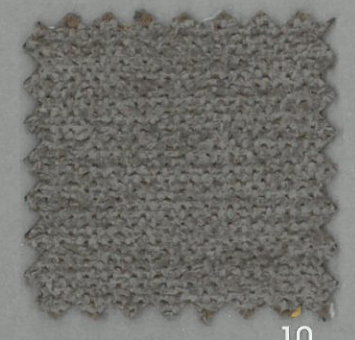
5



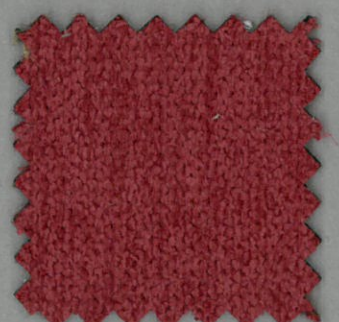
6



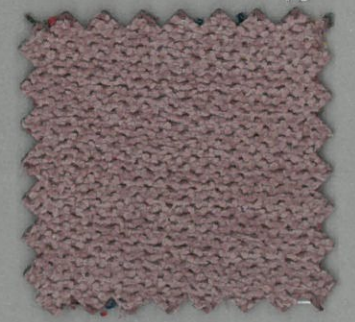
9



10



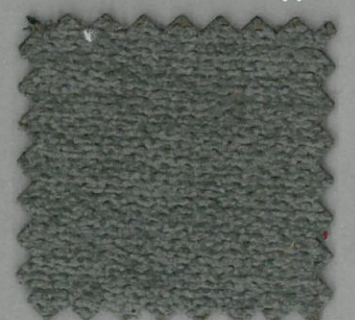
16



17



22



23

ESPECIFICACIONES TÉCNICAS

TECHNICAL SPECIFICATIONS
SPÉCIFICATIONS TECHNIQUES

COLECCIÓN/ COLLECTION/ COLLECTION

AÑIL

COMPOSICIÓN : 92% PES./8%NYL.

COMPOSITION : 92% PES./8%NYL.

COMPOSITION :92% PES./8%NYL.

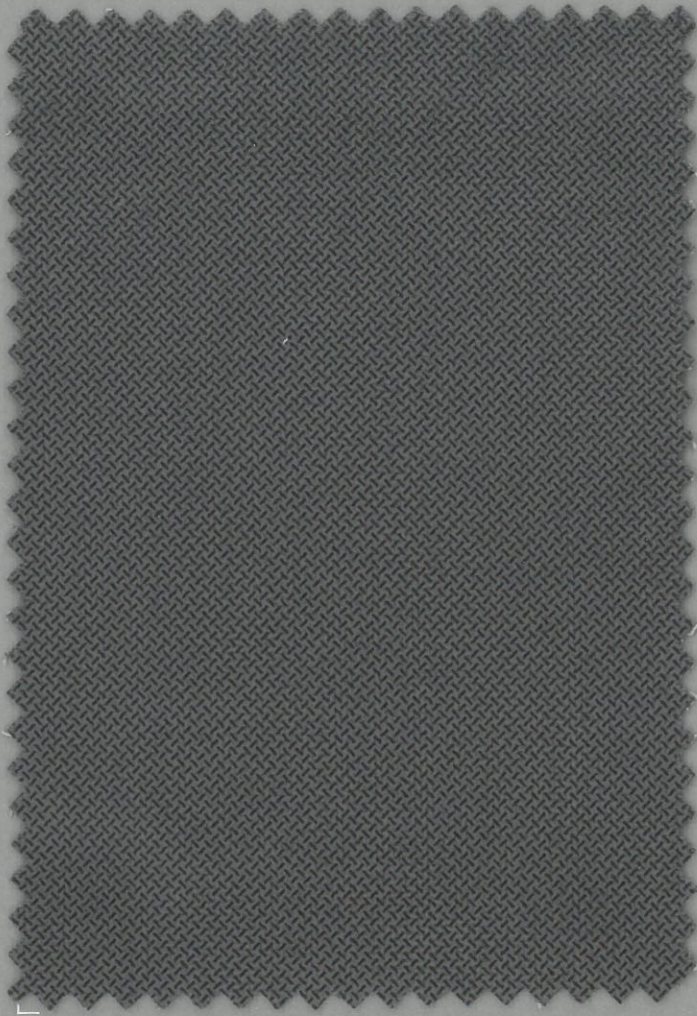
ANCHO/width/largeur : 140 CMS.

PESO/weight/poids : 460 gr./m2 644 gr./ml

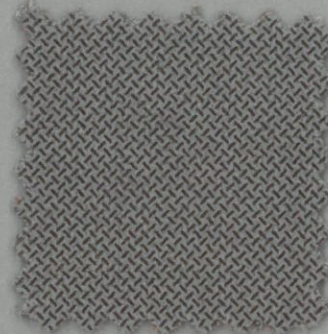
RESISTENCIA DE LAS COSTURAS Seam strength Résistance des coutures	URDIMBRE/warp/chaîne: 355 N	BS 3320:1988 ISO 13936-2
	TRAMA/weft/trame : 472 N	BS 2543:1995 ISO 13936-2
Seam Slippage	URDIMBRE/warp/chaîne: 1.70 MM	EN ISO 13936-2
	TRAMA/weft/trame: 2.10 MM	EN ISO 13936-2
RESISTENCIA DE ROTURA AL RASGADO Tear strength Résistance à la déchirure	URDIMBRE/warp/chaîne: 125 N	EN ISO 13937-3
	TRAMA/weft/trame: 79 N	EN ISO 13937-3
RESISTENCIA A LA ABRASIÓN Abrasion resistance Résistance à l'abrasion	CICLOS/cycles/cycles : > 40000	ISO 12947-2 1998
SOLIDEZ DE LOS COLORES A LA LUZ Colour fastness to light Résistance à la lumière	4	UNE 40187 BS 1006-B02
SOLIDEZ A LA LIMPIEZA EN SECO Rubbing solvents Résistance au nettoyage à sec	4	ISO 105-D01 UNE 40099
SOLIDEZ DE LOS COLORES AL LAVADO Rubbing fastness in humid state Résistance au nettoyage	4	ISO 105-C06 UNE 40029
RESISTENCIA AL PILLING Pilling resistance Résistance au pilling	4	ISO/DIS 12945-2

INSTRUCCIONES DE LAVADO / Washing Instructions / Instructions de lavage

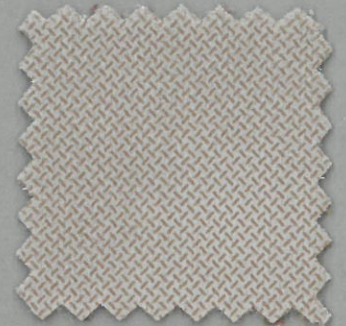




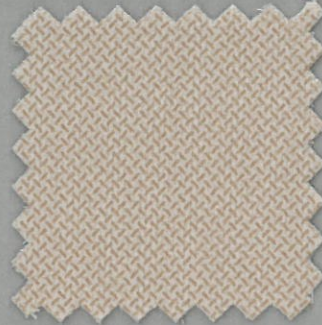
2



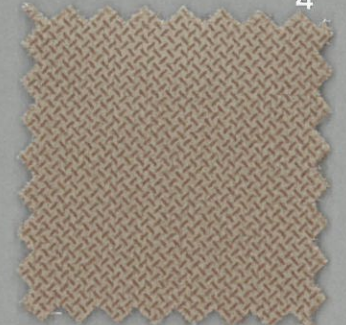
3



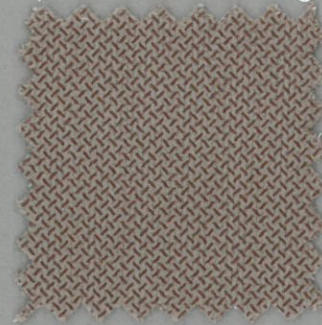
4



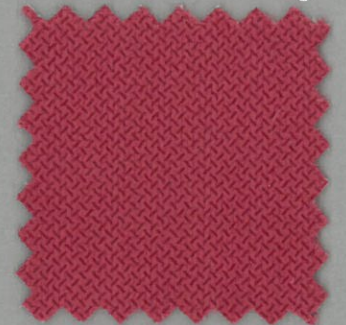
5



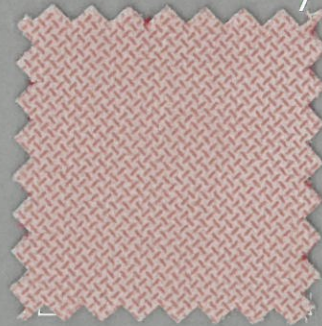
6



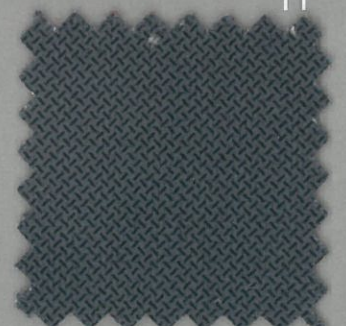
7



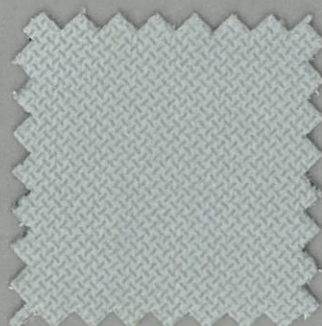
11



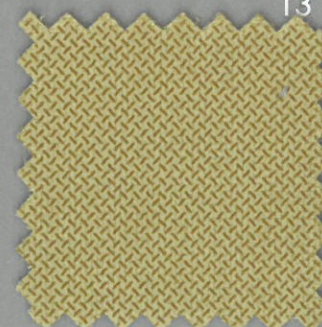
13



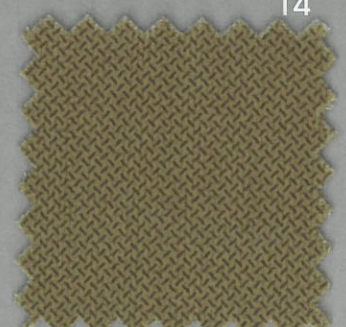
14



15



17



18

ESPECIFICACIONES TÉCNICAS

TECHNICAL SPECIFICATIONS
SPÉCIFICATIONS TECHNIQUES

COLECCIÓN/ COLLECTION/ COLLECTION

GIO

COMPOSICIÓN : 100 % POLIESTER
COMPOSITION : 100% POLYESTER
COMPOSITION : 100% POLYESTER

ANCHO/width/largeur : 140 CM

PESO/weight/poids : 320 gr/ m2 - 448 gr/ml

RESISTENCIA DE LAS COSTURAS Seam strength Résistance des coutures	URDIMBRE/warp/chaîne: 2,0mm TRAMA/weft/trame : 2,5 mm	BS 3320:1988 BS 2543:1995
RESISTENCIA DE ROTURA AL RASGADO Tear strength Résistance à la déchirure	URDIMBRE/warp/chaîne: 100 N TRAMA/weft/trame: 72 N	ISO 13937-3:2000 ISO 13937-3:2000
RESISTENCIA A LA ABRASIÓN Abrasion resistance Résistance à l'abrasion	CICLOS/cycles/cycles : > 30000	ISO 12947-2:1998
SOLIDEZ DE LOS COLORES A LA LUZ Colour fastness to light Résistance à la lumière	5	ISO 105 B02:1994
SOLIDEZ A LA LIMPIEZA EN SECO Rubbing solvents Résistance au nettoyage à sec	5	ISO 105X12:2001
SOLIDEZ DE LOS COLORES AL LAVADO Rubbing fastness in humid state Résistance au nettoyage	5	ISO 105X12:2001
RESISTENCIA AL PILLING Pilling resistance Résistance au pilling	5	ISO 12945-2

INSTRUCCIONES DE LAVADO / Washing Instructions / Instructions de lavage





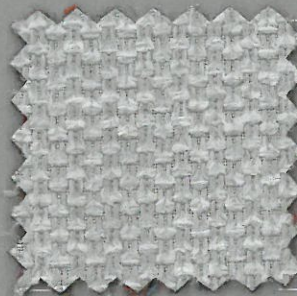
VIALE
COLLECTIONS

LALO

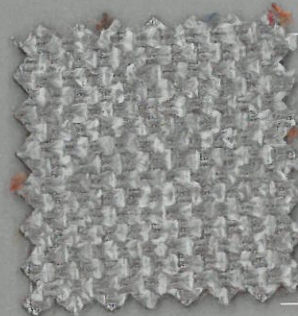
Serie A



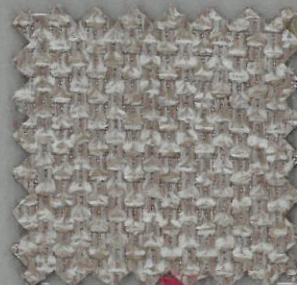
CREMA



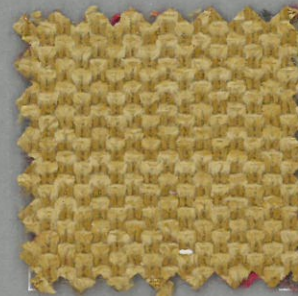
PERLA



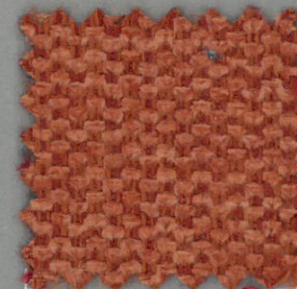
PLATA



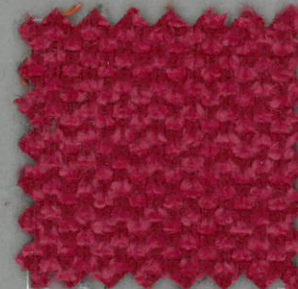
PLOMO



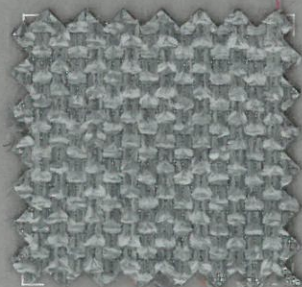
OCRE



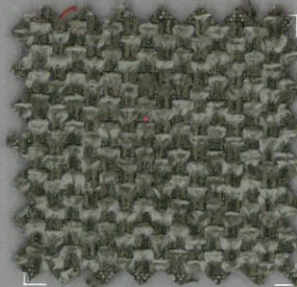
NARANJA



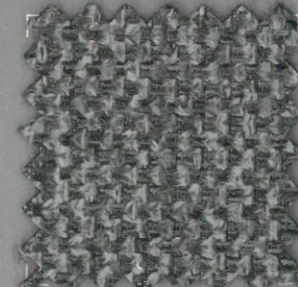
GRANATE



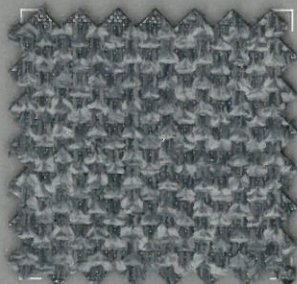
OCEANO



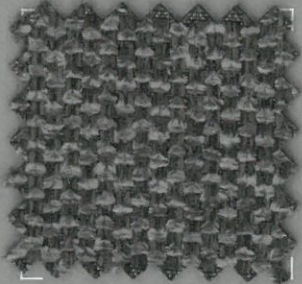
CAQUI



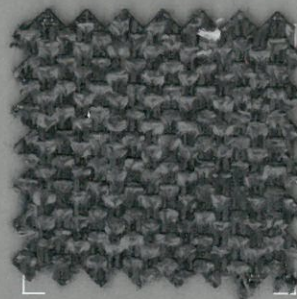
MARENGO



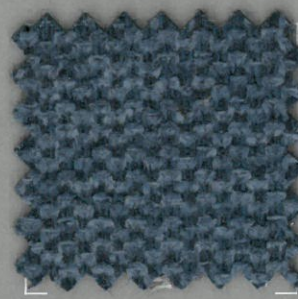
CELULEO



ACERO



GRAFITO



MARINO

ESPECIFICACIONES TÉCNICAS

TECHNICAL SPECIFICATIONS
SPÉCIFICATIONS TECHNIQUES

COLECCIÓN/ COLLECTION/ COLLECTION

LALO

COMPOSICIÓN : 100% POLIESTER

COMPOSITION : 100% POLYESTER

COMPOSITION : 100% POLYESTER

ANCHO/width/largeur : 140 CM

PESO/weight/poids : 320 gr./m2

RESISTENCIA A LA ABRASIÓN

Abrasion resistance

Résistance à l'abrasion

CICLOS/cycles/cycles : > 60.000

SOLIDEZ DE LOS COLORES A LA LUZ

Colour fastness to light

Résistance à la lumière

4-5

SOLIDEZ A LA LIMPIEZA EN SECO

Rubbing solvents

Résistance au nettoyage à sec

4-5

SOLIDEZ DE LOS COLORES AL LAVADO

Rubbing fastness in humid state

Résistance au nettoyage

4-5

RESISTENCIA AL PILLING

Pilling resistance

Résistance au pilling

4-5

INSTRUCCIONES DE LAVADO / Washing Instructions / Instructions de lavage

A máquina, en agua fría. Velcros y cremalleras cerradas. Del revés.

A mano, con jabón neutro y un paño húmedo.



UNE 1021
PARTIE 1



ANTI
MANCHAS

ESPECIFICACIONES TÉCNICAS

TECHNICAL SPECIFICATIONS

SPÉCIFICATIONS TECHNIQUES

COLECCIÓN/ COLLECTION/ COLLECTION

HEROS

COMPOSICIÓN : 85% POLIESTER + 15% NYLON

COMPOSITION : 85% POLYESTER + 15% NYLON

COMPOSITION : 85% POLYESTER + 15% NYLON

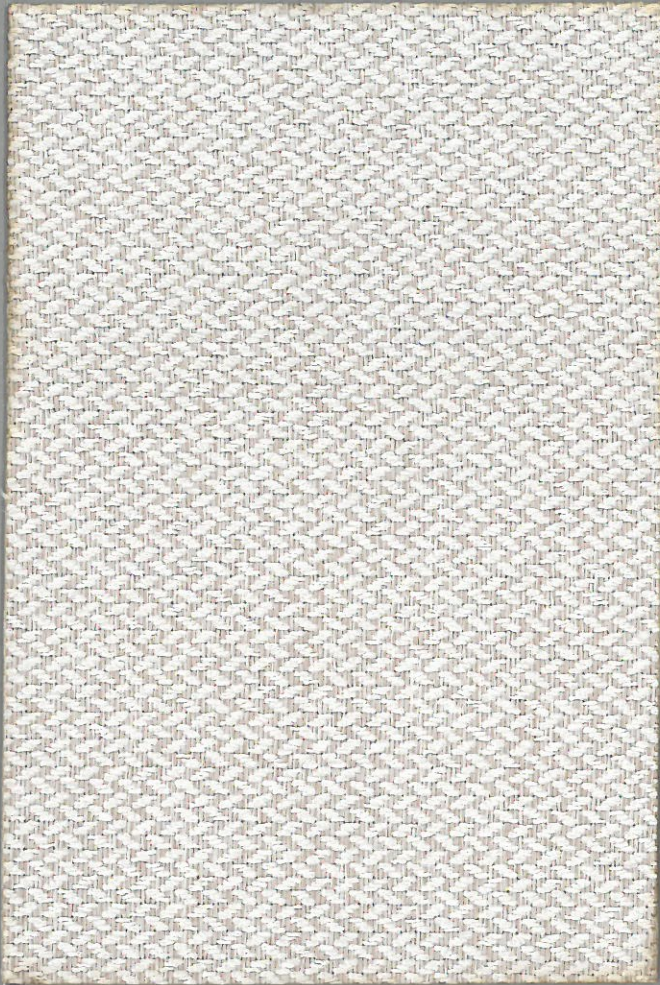
ANCHO/width/largeur : 140 CM

PESO/weight/poids : 378 g/lm (+/-5%)

RESISTENCIA DE LAS COSTURAS Seam strength Résistance des coutures	URDIMBRE/warp/chaîne: 3.0 MM	EN ISO 13936-2
	TRAMA/weft/trame : 3,8 MM	EN ISO 13936-2
RESISTENCIA DE ROTURA AL RASGADO Tear strength Résistance à la déchirure	URDIMBRE/warp/chaîne: 190,9 N	EN ISO 13937-3
	TRAMA/weft/trame: 183,6 N	
RESISTENCIA A LA TRACCIÓN Tensile strength	URDIMBRE/warp/chaîne: exceed 1430 N - 44,9%	EN ISO 13934-1
	TRAMA/weft/trame: 1SS1 N - 25,0%	
RESISTENCIA A LA ABRASIÓN Abrasion resistance Résistance à l'abrasion	CICLOS/cycles/cycles : > 90.000	EN ISO 12947-1,2
SOLIDEZ DE LOS COLORES A LA LUZ Colour fastness to light Résistance à la lumière	5	EN ISO 105-802
SOLIDEZ A LA LIMPIEZA EN SECO Rubbing solvents Résistance au nettoyage à sec	4-5	EN ISO 105-X12
SOLIDEZ DE LOS COLORES AL LAVADO Rubbing fastness in humid state Résistance au nettoyage	5	EN ISO 105-X12
RESISTENCIA AL PILLING Pilling resistance Résistance au pilling	4	ENISO 12945-2

INSTRUCCIONES DE LAVADO / Washing Instructions / Instructions de lavage





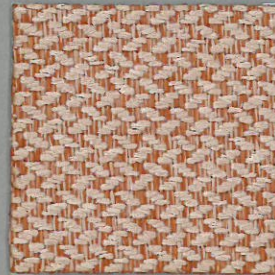
PEARL



TOFFEE



YELLOW



ORANGE



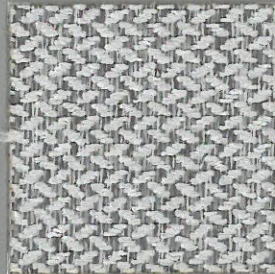
TRUFFLE



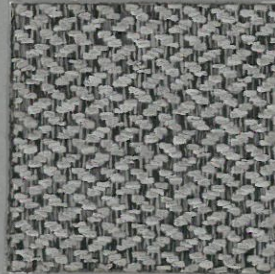
AVOCAT



EBONY



CEMENT



MOUSE



WATERGREEN



ASH



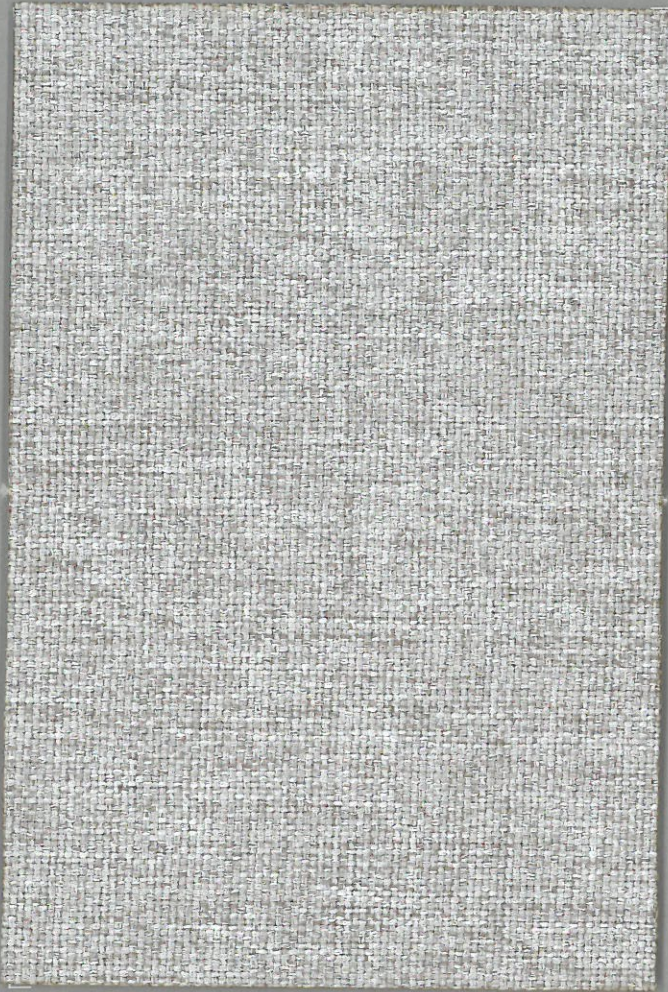
ESMERALD



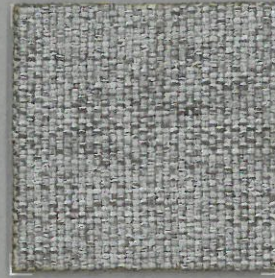
OCEAN



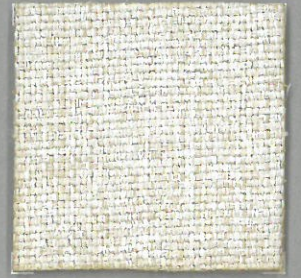
BLACK



CEMENT



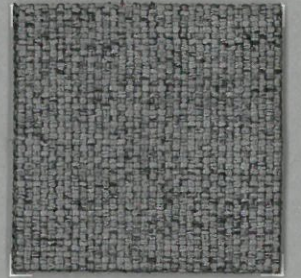
ASH



CREAM



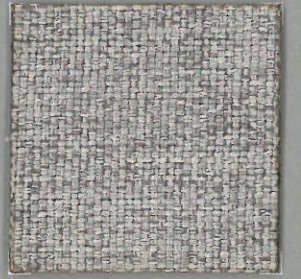
TRUFFLE



ANTHRACITE



BLACK



TAUPE



PINK



RED



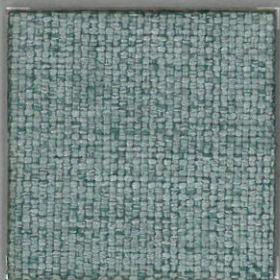
YELLOW



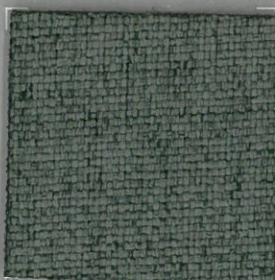
KHAKI



AVOCAT



TURQUOISE



FOREST



BLUE

ESPECIFICACIONES TÉCNICAS

TECHNICAL SPECIFICATIONS

SPÉCIFICATIONS TECHNIQUES

COLECCIÓN/ COLLECTION/ COLLECTION

NAIROBI

COMPOSICIÓN : 100% POLIESTER

COMPOSITION : 100% POLYESTER

COMPOSITION : 100% POLYESTER

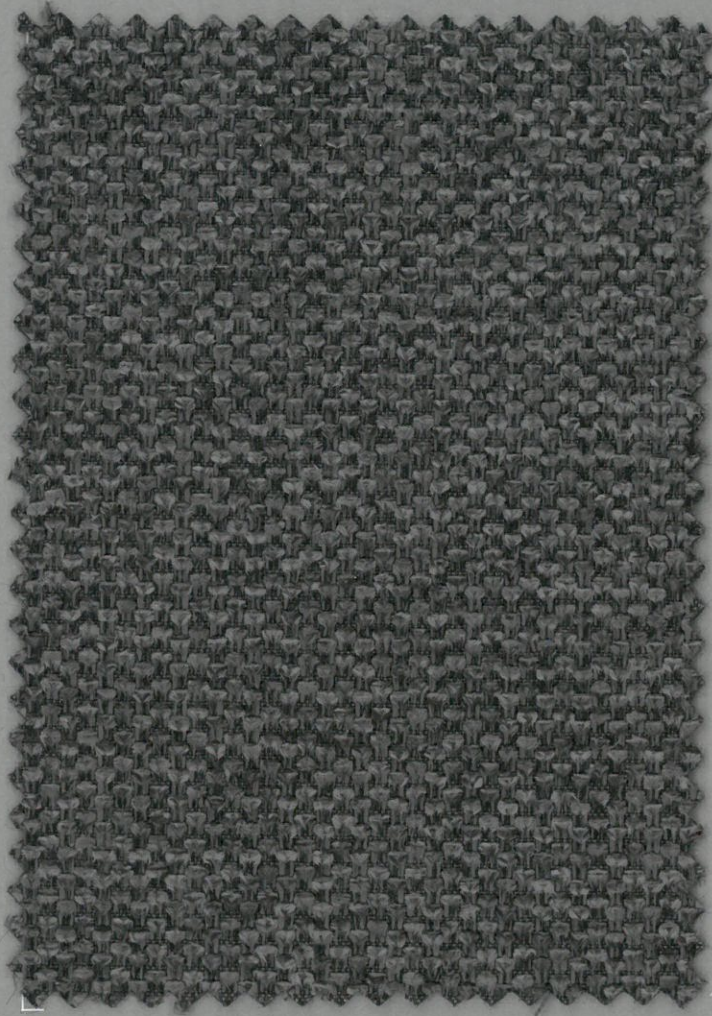
ANCHO/width/largeur : 140 CM

PESO/weight/poids : 434 g/lm (+/-5%)

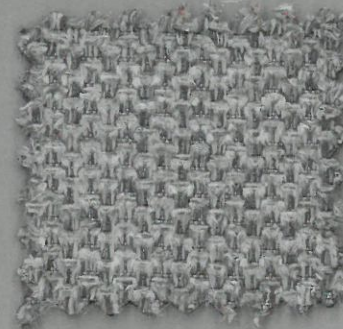
RESISTENCIA DE LAS COSTURAS Seam strength Résistance des coutures	URDIMBRE/warp/chaîne: 3,6 MM TRAMA/weft/trame : 3,0 MM	EN ISO 13936-2 EN ISO 13936-2
RESISTENCIA DE ROTURA AL RASGADO Tear strength Résistance à la déchirure	URDIMBRE/warp/chaîne: 121,8 N TRAMA/weft/trame: 78,5 N	EN ISO 13937-3
RESISTENCIA A LA TRACCIÓN Tensile strength	URDIMBRE/warp/chaîne: exceed 1430 N -48,8 % TRAMA/weft/trame: 565 N - 39,8%	EN ISO 13934-1
RESISTENCIA A LA ABRASIÓN Abrasion resistance Résistance à l'abrasion	CICLOS/cycles/cycles : >100.000	EN ISO 12947-1,2
SOLIDEZ DE LOS COLORES A LA LUZ Colour fastness to light Résistance à la lumière	4-5	EN ISO 105-802
SOLIDEZ A LA LIMPIEZA EN SECO Rubbing solvents Résistance au nettoyage à sec	4-5	EN ISO 105-X12
SOLIDEZ DE LOS COLORES AL LAVADO Rubbing fastness in humid state Résistance au nettoyage	4	EN ISO 105-X12
RESISTENCIA AL PILLING Pilling resistance Résistance au pilling	4	EN ISO 1294S-2

INSTRUCCIONES DE LAVADO / Washing Instructions / Instructions de lavage

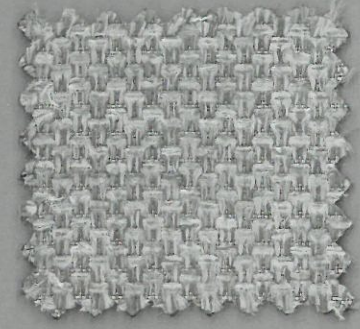




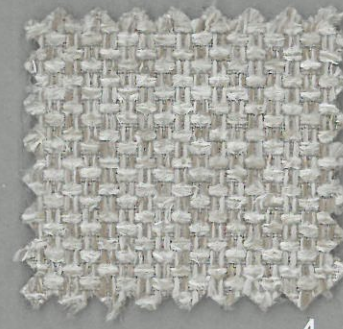
1



2



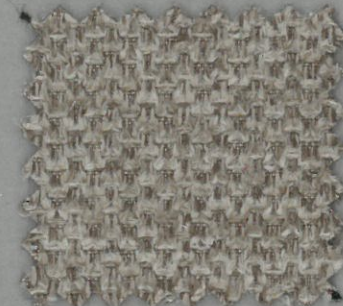
3



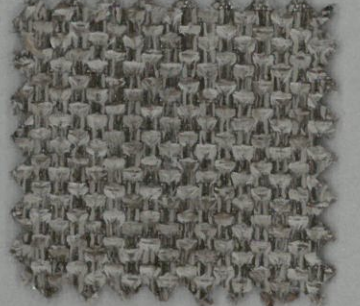
4



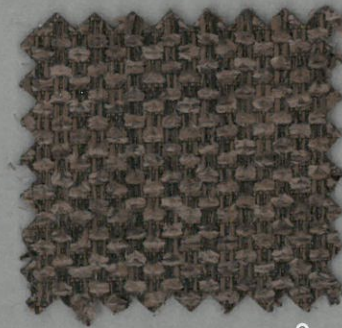
5



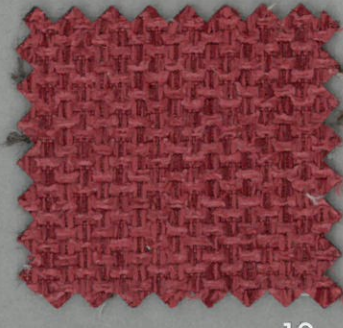
6



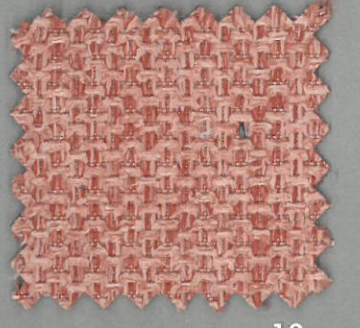
7



8



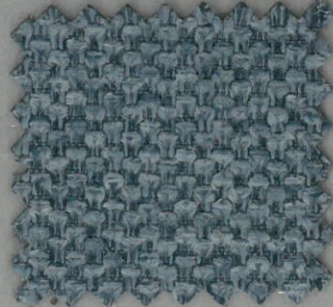
12



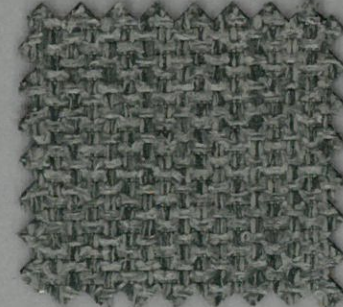
13



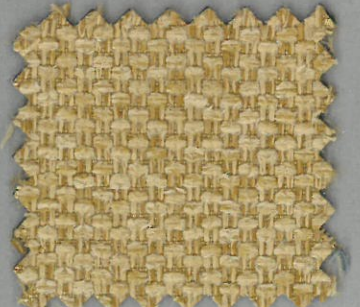
14



16



18



19

ESPECIFICACIONES TÉCNICAS

TECHNICAL SPECIFICATIONS

SPÉCIFICATIONS TECHNIQUES

COLECCIÓN/ COLLECTION/ COLLECTION
COCO

COMPOSICIÓN : 95% PES./5% NYL.

COMPOSITION : 95% PES./5% NYL.

COMPOSITION : 95% PES./5% NYL.

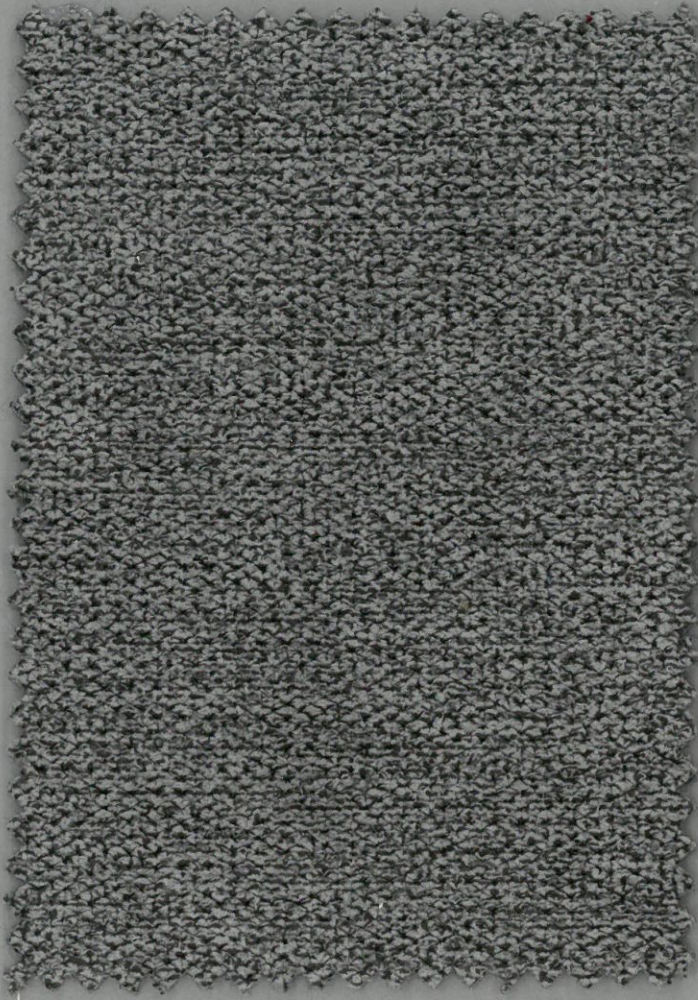
ANCHO/width/largeur : 140 CMS.

PESO/weight/poids : 490 gr./m² 686 gr./ml

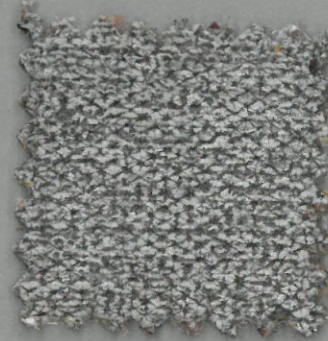
RESISTENCIA DE LAS COSTURAS Seam strength Résistance des coutures	URDIMBRE/warp/chaîne: 342 N	BS 3320:1988 ISO 13936-2
	TRAMA/weft/trame : 426 N	BS 2543:1995 ISO 13936-2
Seam Slippage	URDIMBRE/warp/chaîne: 3.40 MM	EN ISO 13936-2
	TRAMA/weft/trame: 3.4 MM	EN ISO 13936-2
RESISTENCIA DE ROTURA AL RASGADO Tear strength Résistance à la déchirure	URDIMBRE/warp/chaîne: 177 N	EN ISO 13937-3
	TRAMA/weft/trame: 96 N	EN ISO 13937-3
RESISTENCIA A LA ABRASIÓN Abrasion resistance Résistance à l'abrasion	CICLOS/cycles/cycles : > 40000	ISO 12947-2 1998
SOLIDEZ DE LOS COLORES A LA LUZ Colour fastness to light Résistance à la lumière	4	UNE 40187 BS 1006-B02
SOLIDEZ A LA LIMPIEZA EN SECO Rubbing solvents Résistance au nettoyage à sec	4	ISO 105-D01 UNE 40099
SOLIDEZ DE LOS COLORES AL LAVADO Rubbing fastness in humid state Résistance au nettoyage	4	ISO 105-C06 UNE 40029
RESISTENCIA AL PILLING Pilling resistance Résistance au pilling	4	ISO/DIS 12945-2

INSTRUCCIONES DE LAVADO / Washing Instructions / Instructions de lavage

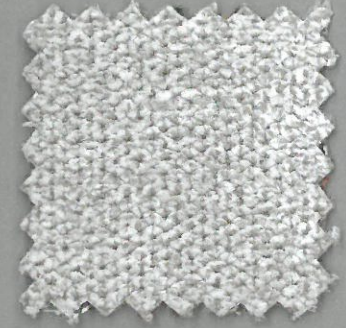




2



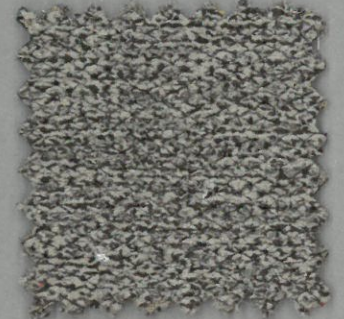
3



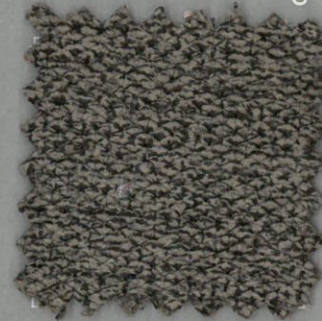
4



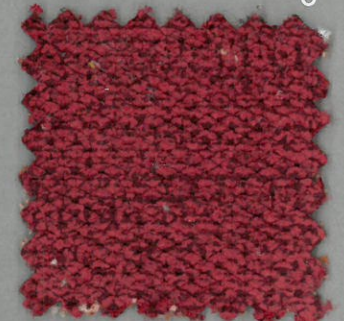
6



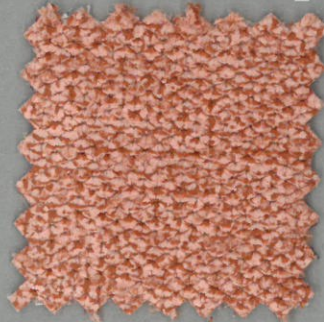
8



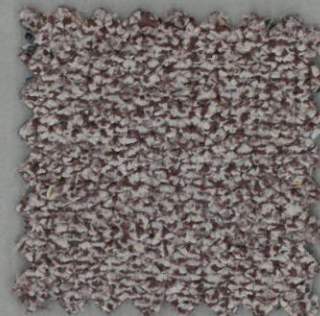
9



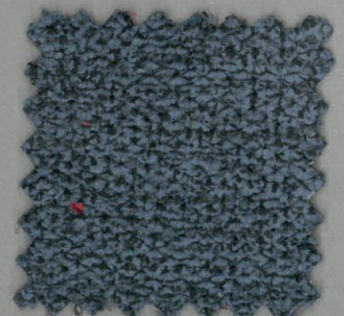
14



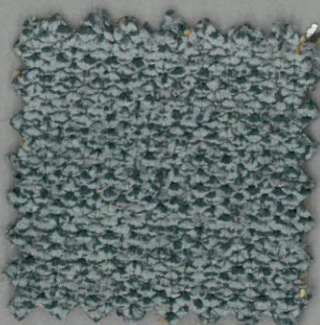
15



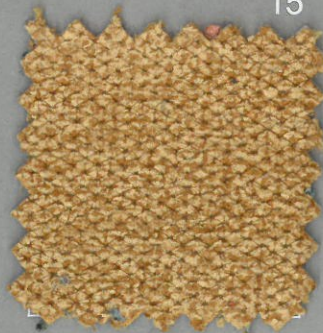
16



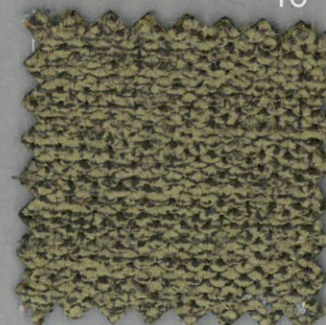
17



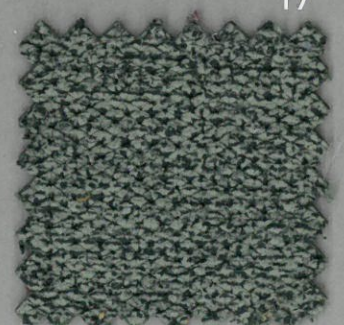
19



20



21



23

ESPECIFICACIONES TÉCNICAS

TECHNICAL SPECIFICATIONS

SPÉCIFICATIONS TECHNIQUES

COLECCIÓN/ COLLECTION/ COLLECTION
DIAMANTE

COMPOSICIÓN : 90% PES./10% NYL.

COMPOSITION : 90% PES./10% NYL.

COMPOSITION : 90% PES./10% NYL.

ANCHO/width/largeur : 140 CMS.

PESO/weight/poids : 530 gr./m2 742 gr./ml

RESISTENCIA DE LAS COSTURAS Seam strength Résistance des coutures	URDIMBRE/warp/chaîne: 413 N	BS 3320:1988 ISO 13936-2
	TRAMA/weft/trame : 481 N	BS 2543:1995 ISO 13936-2
Seam Slippage	URDIMBRE/warp/chaîne: 2.10 MM	EN ISO 13936-2
	TRAMA/weft/trame: 2.10 MM	EN ISO 13936-2
RESISTENCIA DE ROTURA AL RASGADO Tear strength Résistance à la déchirure	URDIMBRE/warp/chaîne: 83 N	EN ISO 13937-3
	TRAMA/weft/trame: 47 N	EN ISO 13937-3
RESISTENCIA A LA ABRASIÓN Abrasion resistance Résistance à l'abrasion	CICLOS/cycles/cycles : > 30000	ISO 12947-2 1998
SOLIDEZ DE LOS COLORES A LA LUZ Colour fastness to light Résistance à la lumière	4	UNE 40187 BS 1006-B02
SOLIDEZ A LA LIMPIEZA EN SECO Rubbing solvents Résistance au nettoyage à sec	4	ISO 105-D01 UNE 40099
SOLIDEZ DE LOS COLORES AL LAVADO Rubbing fastness in humid state Résistance au nettoyage	4	ISO 105-C06 UNE 40029
RESISTENCIA AL PILLING Pilling resistance Résistance au pilling	4-5	ISO/DIS 12945-2

INSTRUCCIONES DE LAVADO / Washing Instructions / Instructions de lavage

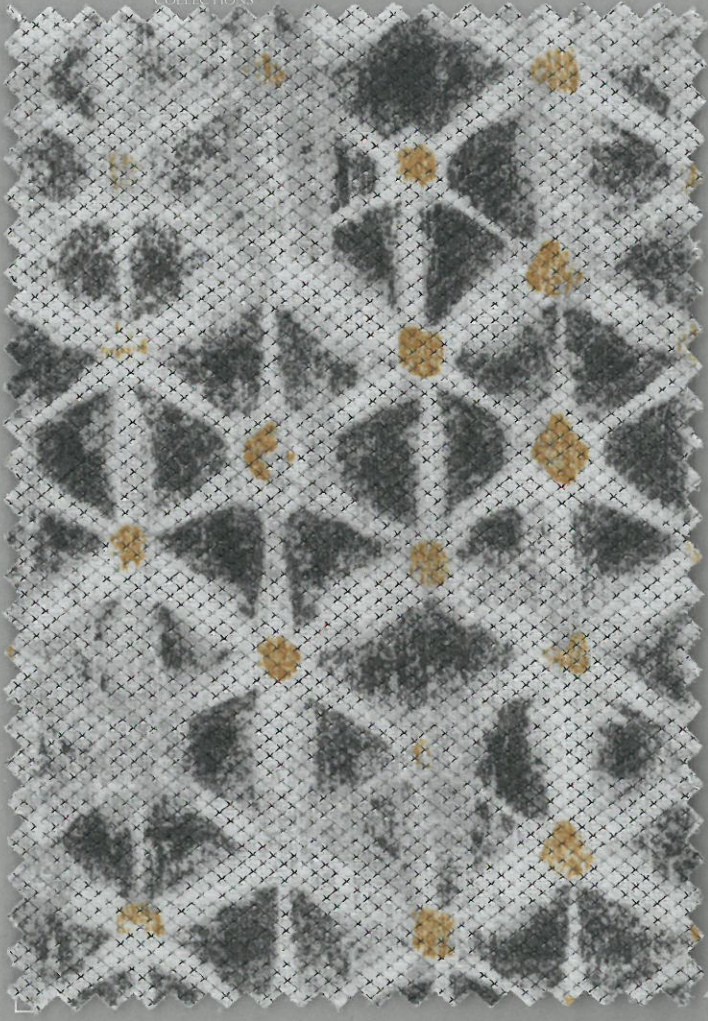




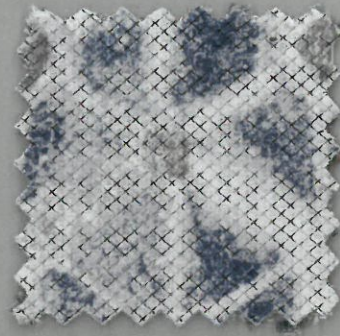
FLORA



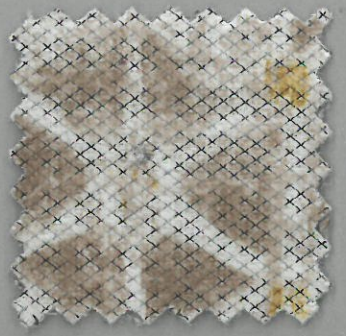
Serie B



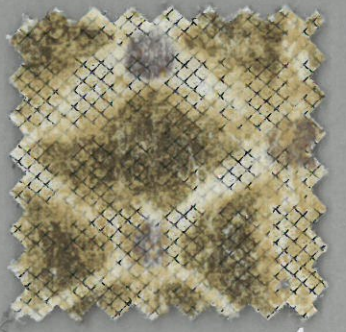
1



2

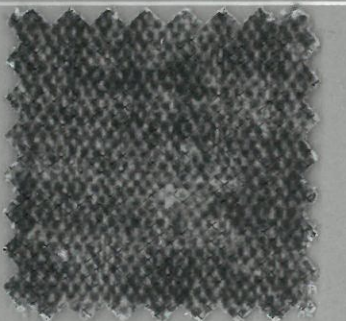


3

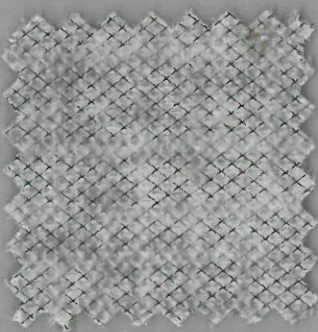


4

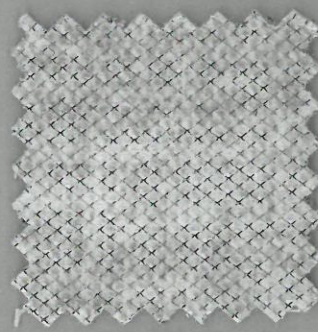
OLEA



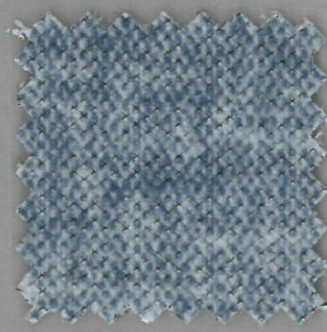
1



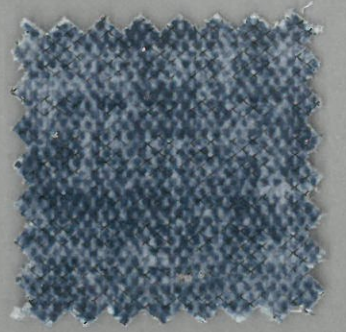
2



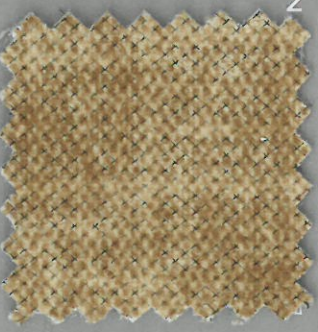
3



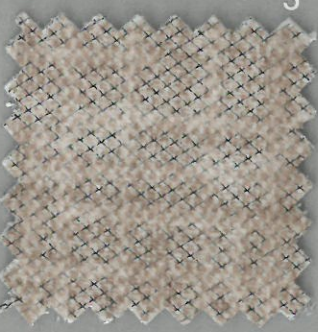
4



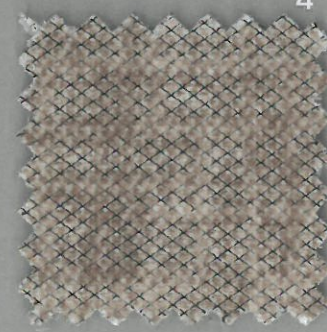
5



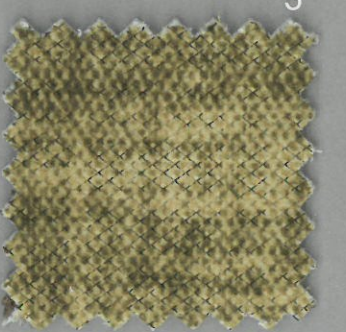
6



7



8



9

ESPECIFICACIONES TÉCNICAS

TECHNICAL SPECIFICATIONS

SPÉCIFICATIONS TECHNIQUES

COLECCIÓN/ COLLECTION/ COLLECTION

FLORA/OLEA

COMPOSICIÓN : 100 %PES.

COMPOSITION : 100 %PES.

CMPOSITION : 100 %PES.

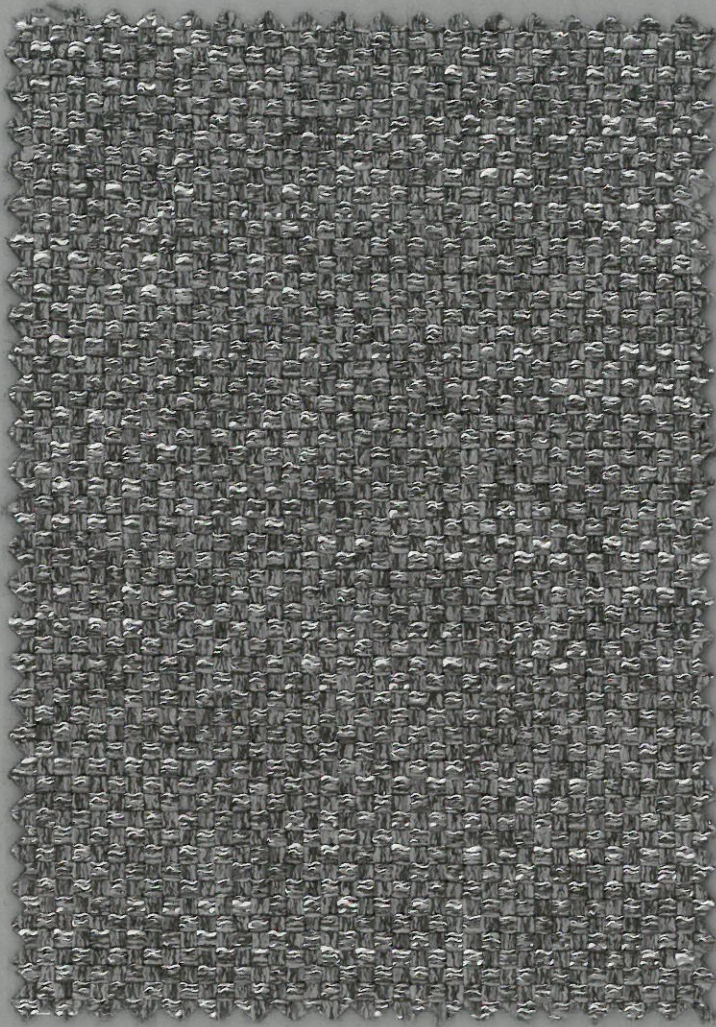
ANCHO/width/largeur : 140 CMS.

PESO/weight/poids : 370 Gr/m2 - 520 Gr/ml

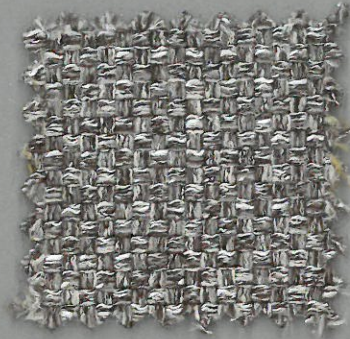
RESISTENCIA DE LAS COSTURAS Seam strength Résistance des coutures	URDIMBRE/warp/chaîne: 2 MM	BS 3320:1988 ISO 13936-2
	TRAMA/weft/trame : 2.7 MM	BS 2543:1995 ISO 13936-2
Seam Slippage	URDIMBRE/warp/chaîne: 1.70 MM	EN ISO 13936-2
	TRAMA/weft/trame: 2.10 MM	EN ISO 13936-2
RESISTENCIA DE ROTURA AL RASGADO Tear strength Résistance à la déchirure	URDIMBRE/warp/chaîne: 58.4 N	EN ISO 13937-3
	TRAMA/weft/trame: 53.3 N	EN ISO 13937-3
RESISTENCIA A LA ABRASIÓN Abrasion resistance Résistance à l'abrasion	CICLOS/cycles/cycles : > 24.000	ISO 12947-2 1998
SOLIDEZ DE LOS COLORES A LA LUZ Colour fastness to light Résistance à la lumière	4-5	UNE 40187 BS 1006-B02
SOLIDEZ A LA LIMPIEZA EN SECO Rubbing solvents Résistance au nettoyage à sec	4-5	ISO 105-D01 UNE 40099
SOLIDEZ DE LOS COLORES AL LAVADO Rubbing fastness in humid state Résistance au nettoyage	4-5	ISO 105-C06 UNE 40029
RESISTENCIA AL PILLING Pilling resistance Résistance au pilling	4-5	ISO/DIS 12945-2

INSTRUCCIONES DE LAVADO / Washing Instructions / Instructions de lavage

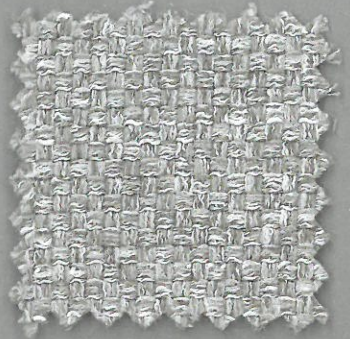




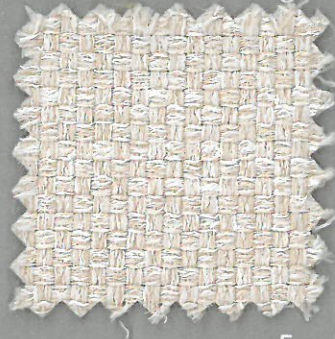
2



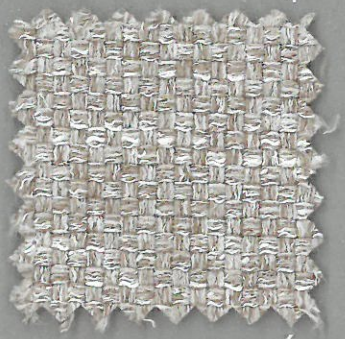
3



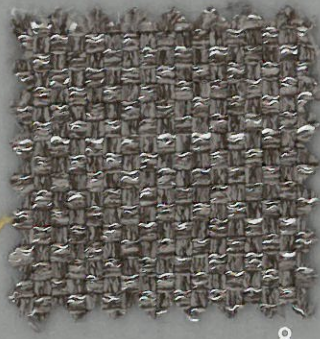
4



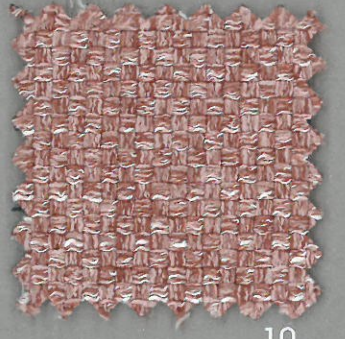
5



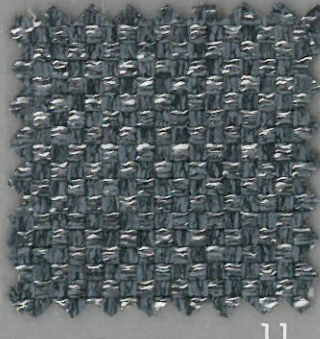
6



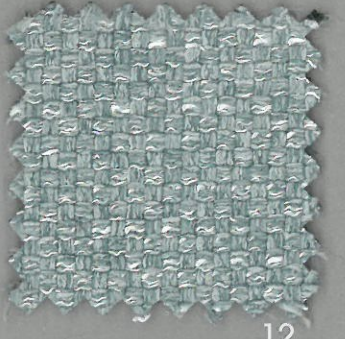
8



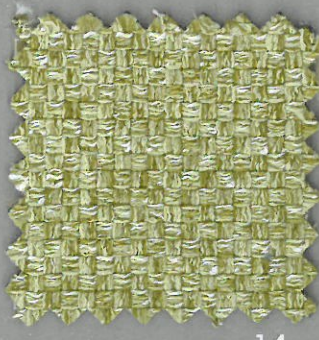
10



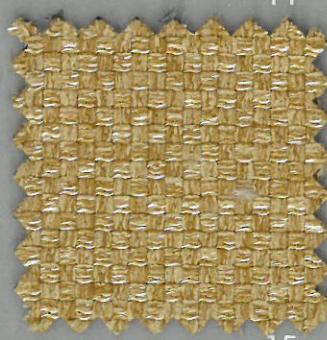
11



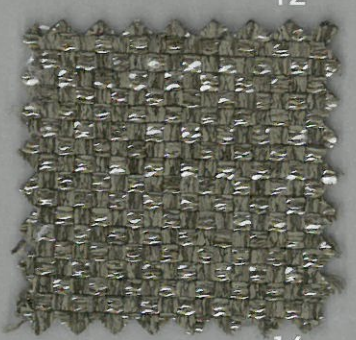
12



14



15



16

ESPECIFICACIONES TÉCNICAS

TECHNICAL SPECIFICATIONS

SPÉCIFICATIONS TECHNIQUES

COLECCIÓN/ COLLECTION/ COLLECTION

DORA

COMPOSICIÓN : 85% POLIESTER - 15% ALGODÓN

COMPOSITION : 85% POLYESTER - 15% COTTON

COMPOSITION : 85% POLYESTER - 15% COTTON

ANCHO/width/largeur : 140 CM

PESO/weight/poids : 365 gr./m2 - 511 gr.ml

RESISTENCIA DE LAS COSTURAS Seam strength Résistance des coutures	URDIMBRE/warp/chaîne: 4 MM	BS 3320:1988 ISO 13936-2
	TRAMA/weft/trame : 4 MM	BS 2543:1995 ISO 13936-2
RESISTENCIA DE ROTURA AL RASGADO Tear strength Résistance à la déchirure	URDIMBRE/warp/chaîne: exceed 215 N	EN ISO 13937-3
	TRAMA/weft/trame: 176 N	EN ISO 13937-3
RESISTENCIA A LA ABRASIÓN Abrasion resistance Résistance à l'abrasion	CICLOS/cycles/cycles : > 30000	ISO 12947-2 1998
SOLIDEZ DE LOS COLORES A LA LUZ Colour fastness to light Résistance à la lumière	4-5	UNE 40187 BS 1006-B02
SOLIDEZ A LA LIMPIEZA EN SECO Rubbing solvents Résistance au nettoyage à sec	4-5	ISO 105-D01 UNE 40099
SOLIDEZ DE LOS COLORES AL LAVADO Rubbing fastness in humid state Résistance au nettoyage	4-5	ISO 105-C06 UNE 40029
RESISTENCIA AL PILLING Pilling resistance Résistance au pilling	4-5	ISO/DIS 12945-2

INSTRUCCIONES DE LAVADO / Washing Instructions / Instructions de lavage



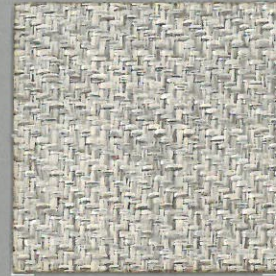


ANFIELD

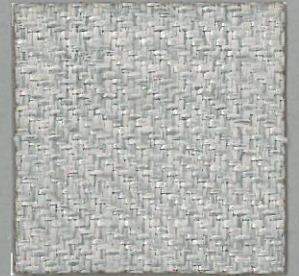
Serie B



PEARL



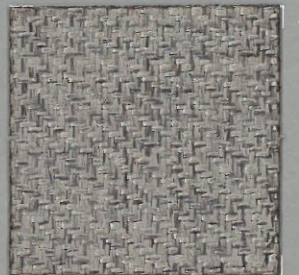
CREAM



ICE



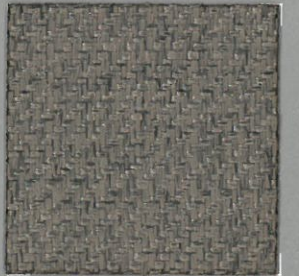
TRUFA



TAUPE



MOCCA



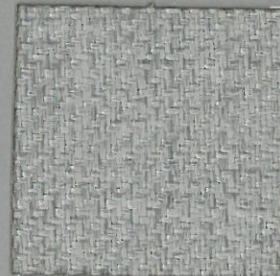
KHAKI



YELLOW



CITRIC



FOG



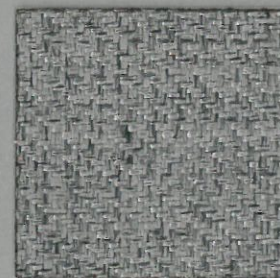
SALMON



SKY



OCEAN



ASH



ANTHRACITE

ESPECIFICACIONES TÉCNICAS

TECHNICAL SPECIFICATIONS
SPÉCIFICATIONS TECHNIQUES

COLECCIÓN/ COLLECTION/ COLLECTION

ANFIELD

COMPOSICIÓN : 100% POLIESTER + 100% ACRILICO

COMPOSITION : 100% POLYESTER + 100% ACRYLIC

COMPOSITION : 100% POLYESTER + 100% ACRYLIC

ANCHO/width/largeur : 142 CM

PESO/weight/poids : 420 g/lm (+/-5%)

RESISTENCIA DE LAS COSTURAS Seam strength Résistance des coutures	URDIMBRE/warp/chaîne: 3,3 MM	EN ISO 13936-2
	TRAMA/weft/trame : 3,5 MM	EN ISO 13936-2

RESISTENCIA DE ROTURA AL RASGADO Tear strength Résistance à la déchirure	URDIMBRE/warp/chaîne: 94,9 N	
	TRAMA/weft/trame: 76,9 N	

RESISTENCIA A LA TRACCIÓN Tensile strength	URDIMBRE/warp/chaîne: exceed 1071 N - 23,2 %	EN ISO 13934-1
	TRAMA/weft/trame: 907 N - 20,8 %	

RESISTENCIA A LA ABRASIÓN Abrasion resistance Résistance à l'abrasion	CICLOS/cycles/cycles : > 100.000	
---	----------------------------------	--

SOLIDEZ DE LOS COLORES A LA LUZ Colour fastness to light Résistance à la lumière	5	EN ISO 105-802
--	---	----------------

SOLIDEZ A LA LIMPIEZA EN SECO Rubbing solvents Résistance au nettoyage à sec	5	EN ISO 105-X12
--	---	----------------

SOLIDEZ DE LOS COLORES AL LAVADO Rubbing fastness in humid state Résistance au nettoyage	4-5	EN ISO 105-X12
--	-----	----------------

RESISTENCIA AL PILLING Pilling resistance Résistance au pilling	4	ENIS 0 1294S-2
---	---	----------------

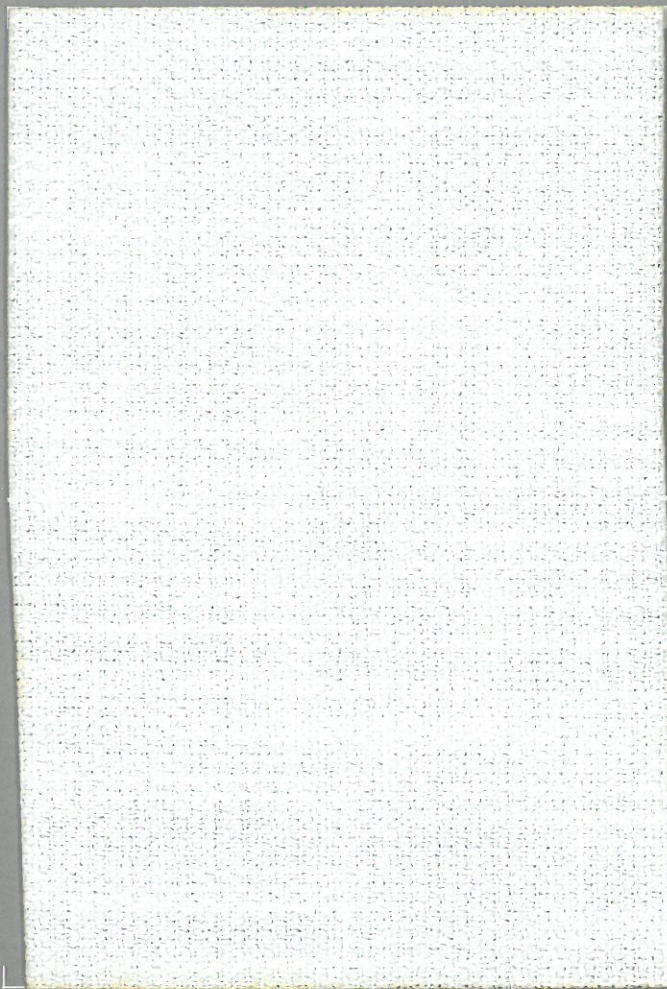
INSTRUCCIONES DE LAVADO / Washing Instructions / Instructions de lavage





CITY

Serie B



WHITE



BEIGE



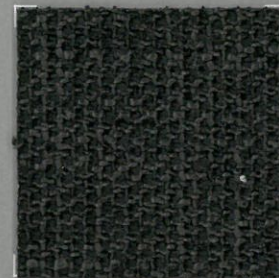
TRUFA



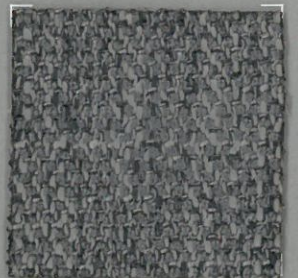
BROWN



SAND



BLACK



DARKGREY



LIGHTGREY



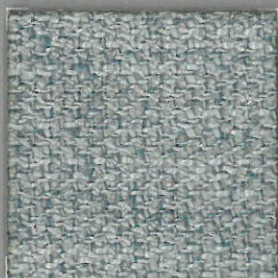
LAVANDA



BORDEAUX



GREEN



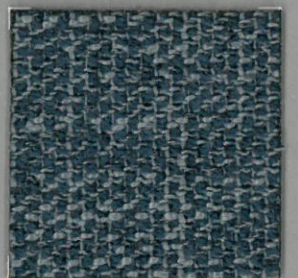
WATERGREEN



CITRIC



TURQUOISE



OCEAN

ESPECIFICACIONES TÉCNICAS

TECHNICAL SPECIFICATIONS
SPÉCIFICATIONS TECHNIQUES

COLECCIÓN/ COLLECTION/ COLLECTION
CITY

COMPOSICIÓN : 100% POLIESTER
COMPOSITION : 100% POLYESTER
COMPOSITION : 100% POLYESTER

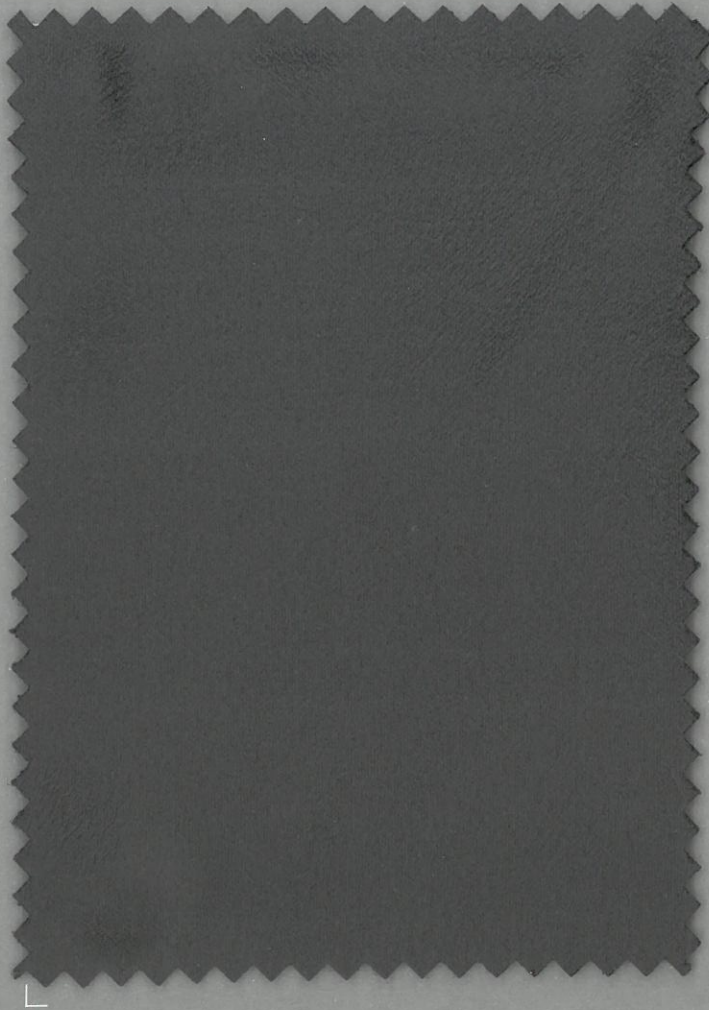
ANCHO/width/largeur : 142 CM

PESO/weight/poids : 420 gr./m2

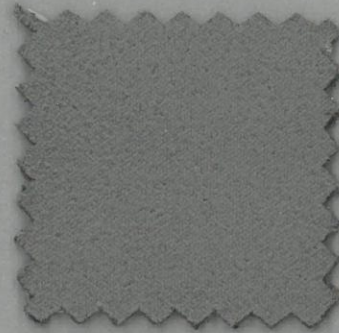
RESISTENCIA DE LAS COSTURAS Seam strength Résistance des coutures	URDIMBRE/warp/chaîne: 3,0 MM TRAMA/weft/trame : 3,3 MM	EN ISO 13936-2 EN ISO 13936-2
RESISTENCIA DE ROTURA AL RASGADO Tear strength Résistance à la déchirure	URDIMBRE/warp/chaîne: exceed : 224,4 N TRAMA/weft/trame: 137,6 N	EN ISO 13936-2
RESISTENCIA A LA TRACCIÓN Tensile strength	URDIMBRE/warp/chaîne: exceed 2580 N - 36,8 % TRAMA/weft/trame: 1098 N - 30,6%	EN ISO 13934-1
RESISTENCIA A LA ABRASIÓN Abrasion resistance Résistance à l'abrasion	CICLOS/cycles/cycles : > 80.000	EN ISO 12947-1,2
SOLIDEZ DE LOS COLORES A LA LUZ Colour fastness to light Résistance à la lumière	5	EN ISO 105-802
SOLIDEZ A LA LIMPIEZA EN SECO Rubbing solvents Résistance au nettoyage à sec	5	EN ISO 105-X12
SOLIDEZ DE LOS COLORES AL LAVADO Rubbing fastness in humid state Résistance au nettoyage	5	EN ISO 105-X12
RESISTENCIA AL PILLING Pilling resistance Résistance au pilling	4	ENISO 12945-2

INSTRUCCIONES DE LAVADO / Washing Instructions / Instructions de lavage





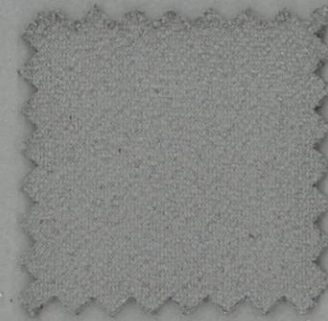
1



2



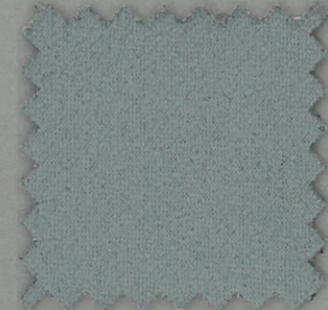
3



4



5



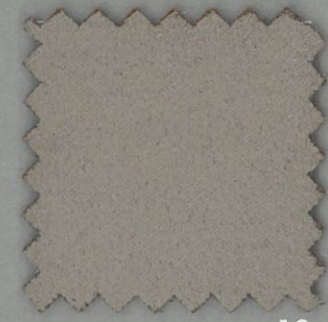
7



8



9



10



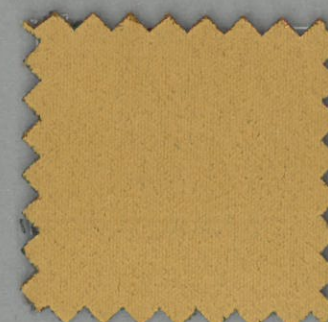
13



15



17



18



21

ESPECIFICACIONES TÉCNICAS

TECHNICAL SPECIFICATIONS

SPÉCIFICATIONS TECHNIQUES

COLECCIÓN/ COLLECTION/ COLLECTION

GABBANA

COMPOSICIÓN : 100% POL.

COMPOSITION : 100% PES.

COMPOSITION : 100% PES.

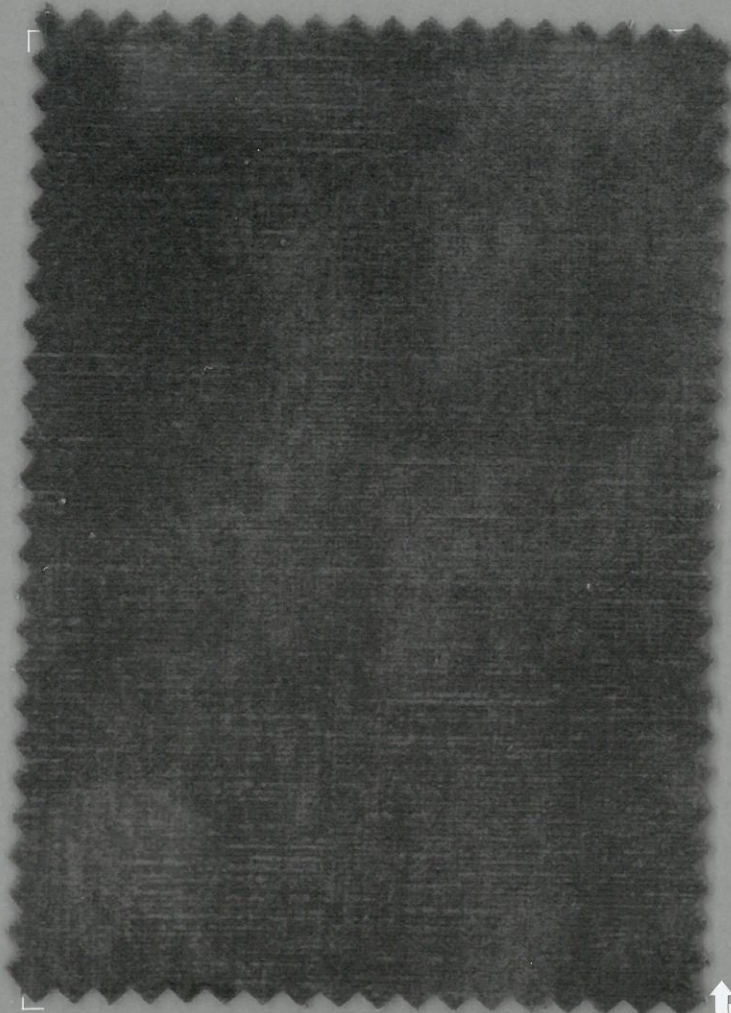
ANCHO/width/largeur : 140 CMS.

PESO/weight/poids : 400 gr./m2 - 560 gr.ml

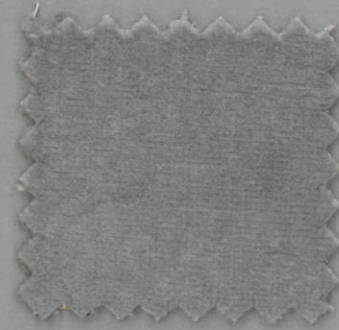
RESISTENCIA DE LAS COSTURAS Seam strength Résistance des coutures	URDIMBRE/warp/chaîne: - N	BS 3320:1988 ISO 13936-2
	TRAMA/weft/trame: - N	BS 2543:1995 ISO 13936-2
RESISTENCIA DE ROTURA AL RASGADO Tear strength Résistance à la déchirure	URDIMBRE/warp/chaîne: - N	EN ISO 13937-3
	TRAMA/weft/trame: - N	EN ISO 13937-3
RESISTENCIA A LA ABRASIÓN Abrasion resistance Résistance à l'abrasion	CICLOS/cycles/cycles: > 40000	ISO 12947-2 1998
SOLIDEZ DE LOS COLORES A LA LUZ Colour fastness to light Résistance à la lumière	4-5	UNE 40187 BS 1006-B02
SOLIDEZ A LA LIMPIEZA EN SECO Rubbing solvents Résistance au nettoyage à sec	4-5	ISO 105-D01 UNE 40099
SOLIDEZ DE LOS COLORES AL LAVADO Rubbing fastness in humid state Résistance au nettoyage	4-5	ISO 105-C06 UNE 40029
RESISTENCIA AL PILLING Pilling resistance Résistance au pilling	4	ISO/DIS 12945-2

INSTRUCCIONES DE LAVADO / Washing Instructions / Instructions de lavage





2



4



6



7



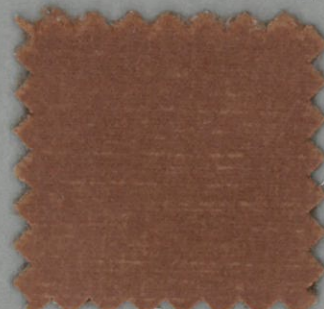
8



9



10



12



13



17



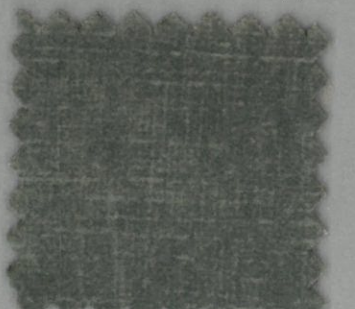
23



21



18



20

ESPECIFICACIONES TÉCNICAS

TECHNICAL SPECIFICATIONS

SPÉCIFICATIONS TECHNIQUES

COLECCIÓN/ COLLECTION/ COLLECTION

YAMA

COMPOSICIÓN : 100 % PES.

COMPOSITION : 100 % PES.

COMPOSITION : 100 % PES.

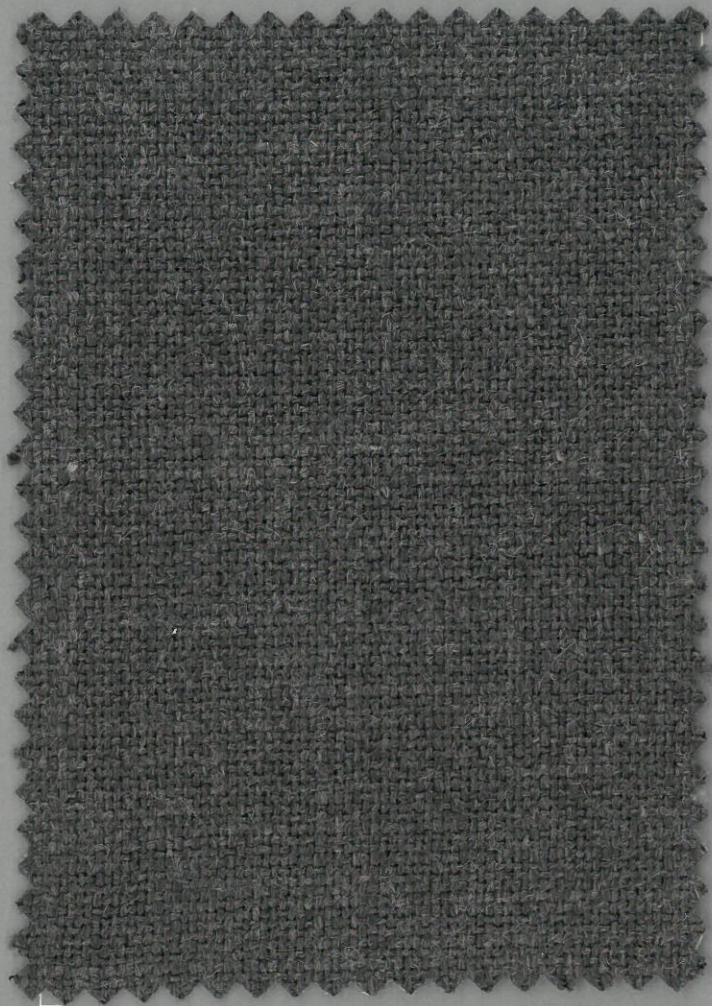
ANCHO/width/largeur : 140 CM / 54 IN

PESO/weight/poids : 440 gr/ m2 - 616 gr/ml

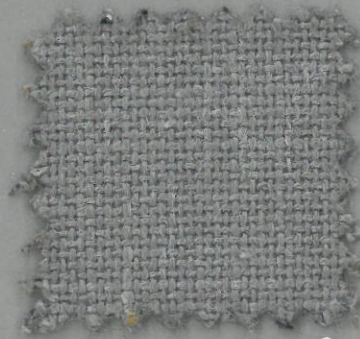
RESISTENCIA DE LAS COSTURAS Seam strength Résistance des coutures	URDIMBRE/warp/chaîne: 3,60 mm.	EN ISO 13936-3:2007
	TRAMA/weft/trame : 3,40 mm	EN ISO 13936-3:2007
RESISTENCIA DE ROTURA AL RASGADO Tear strength Résistance à la déchirure	URDIMBRE/warp/chaîne: 430 N	EN ISO 13937-3:2001
	TRAMA/weft/trame: 510	EN ISO 13937-3:2001
RESISTENCIA A LA ABRASIÓN Abrasion resistance Résistance à l'abrasion	CICLOS/cycles/cycles : > 30000	ISO 12947-2 1998
SOLIDEZ DE LOS COLORES A LA LUZ Colour fastness to light Résistance à la lumière	4-5	ISO 105 B02:1994
SOLIDEZ A LA LIMPIEZA EN SECO Rubbing solvents Résistance au nettoyage à sec	4-5	ISO 105X12:2001
SOLIDEZ DE LOS COLORES AL LAVADO Rubbing fastness in humid state Résistance au nettoyage	4-5	ISO 105X12:2001
RESISTENCIA AL PILLING Pilling resistance Résistance au pilling	4	ISO 12945-2

INSTRUCCIONES DE LAVADO / Washing Instructions / Instructions de lavage

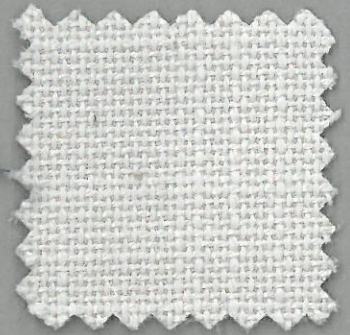




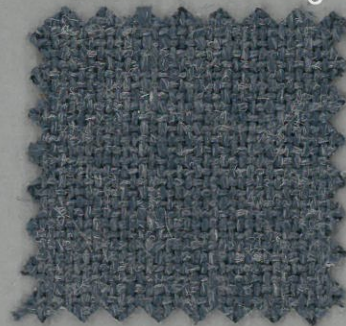
1



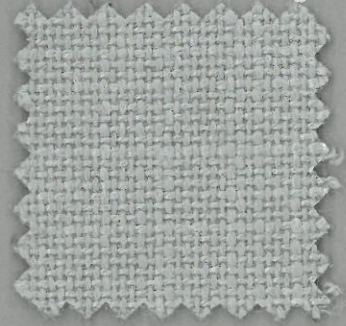
3



5



6



7



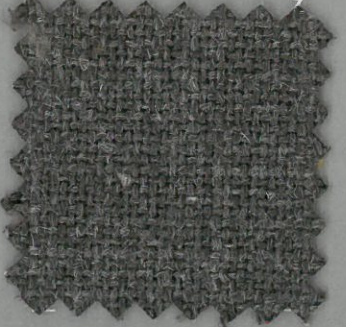
8



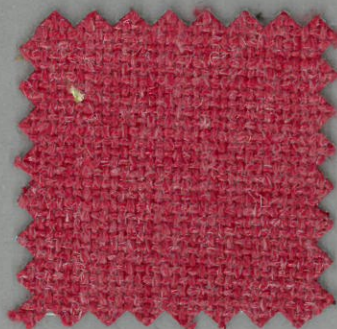
9



10



11



12



14



15

ESPECIFICACIONES TÉCNICAS

TECHNICAL SPECIFICATIONS

SPÉCIFICATIONS TECHNIQUES

COLECCIÓN/ COLLECTION/ COLLECTION
FREEMAN

COMPOSICIÓN : 89 % POLIESTER / 11% LINO

COMPOSITION : 89 % PES. / 11% LI.

COMPOSITION : 89 % PES. / 11% LI

ANCHO/width/largeur : 140 CM

PESO/weight/poids : 495 gr./m2 - 693 gr.ml

RESISTENCIA DE LAS COSTURAS Seam strength Résistance des coutures	URDIMBRE/warp/chaîne: 1,5 MM	BS 3320:1988 ISO 13936-2
	TRAMA/weft/trame : 1,8 MM	BS 2543:1995 ISO 13936-2
RESISTENCIA DE ROTURA AL RASGADO Tear strength Résistance à la déchirure	URDIMBRE/warp/chaîne: 63 N	EN ISO 13937-3
	TRAMA/weft/trame: 63 N	EN ISO 13937-3
RESISTENCIA A LA ABRASIÓN Breaking strength Résistance à l'abrasion	CICLOS/cycles/cycles : > 30.000	ISO 12947-2 1998
SOLIDEZ DE LOS COLORES A LA LUZ Colour fastness to light Résistance à la lumière	5	UNE 40187 BS 1006-B02
SOLIDEZ A LA LIMPIEZA EN SECO Rubbing solvents Résistance au nettoyage à sec	4	ISO 105-D01 UNE 40099
SOLIDEZ DE LOS COLORES AL LAVADO Rubbing fastness in humid state Résistance au nettoyage	4	ISO 105-C06 UNE 40029
RESISTENCIA AL PILLING Pilling resistance Résistance au pilling	4-5	ISO/DIS 12945-2

INSTRUCCIONES DE LAVADO / Washing Instructions / Instructions de lavage



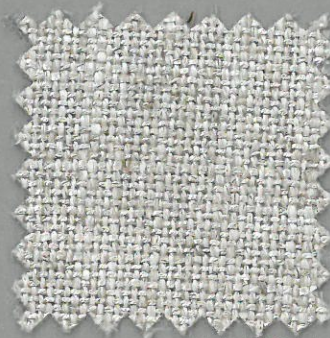


INDIA

Serie C



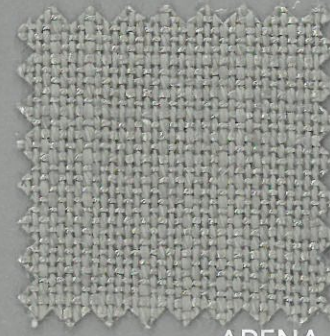
BLANCO



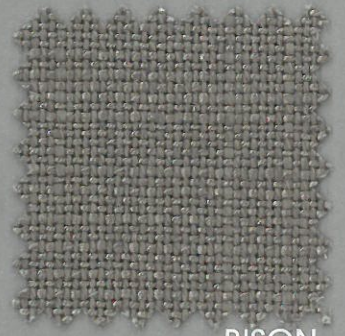
NATURAL



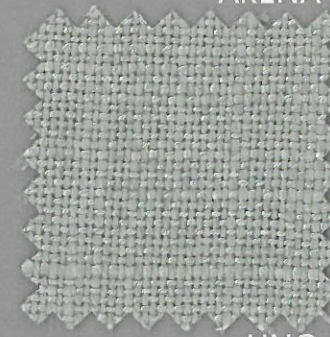
CREMA



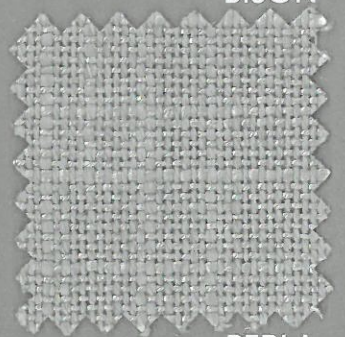
ARENA



BISON



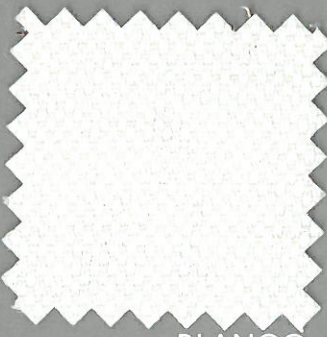
LINO



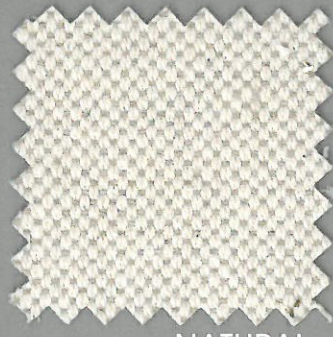
PERLA

DAMASCO

GANDHI



BLANCO



NATURAL



NATURAL

ESPECIFICACIONES TÉCNICAS

TECHNICAL SPECIFICATIONS
SPÉCIFICATIONS TECHNIQUES

COLECCIÓN/ COLLECTION/ COLLECTION

INDIA

COMPOSICIÓN : 70% VISCOSA - 30% LINO

ANCHO/width/largeur : 140 CM

PESO/weight/poids : 390 GR/M2..

RESISTENCIA A LA ABRASIÓN	CICLOS/cycles/cycles : > 40.000
SOLIDEZ DE LOS COLORES A LA LUZ	4-5
SOLIDEZ A LA LIMPIEZA EN SECO	4-5
SOLIDEZ DE LOS COLORES AL LAVADO	4-5
RESISTENCIA AL PILLING	4-5

COLECCIÓN/ COLLECTION/ COLLECTION

DAMASCO

COMPOSICIÓN : 60% ALGODON - 60% LINO

ANCHO/width/largeur : 140 CM

PESO/weight/poids : 390 GR/M2.

RESISTENCIA A LA ABRASIÓN	CICLOS/cycles/cycles : > 33.000
SOLIDEZ DE LOS COLORES A LA LUZ	5
SOLIDEZ A LA LIMPIEZA EN SECO	5
SOLIDEZ DE LOS COLORES AL LAVADO	4
RESISTENCIA AL PILLING	4-5

COLECCIÓN/ COLLECTION/ COLLECTION

GANDHI

COMPOSICIÓN : 60% ALGODON - 40% LINO

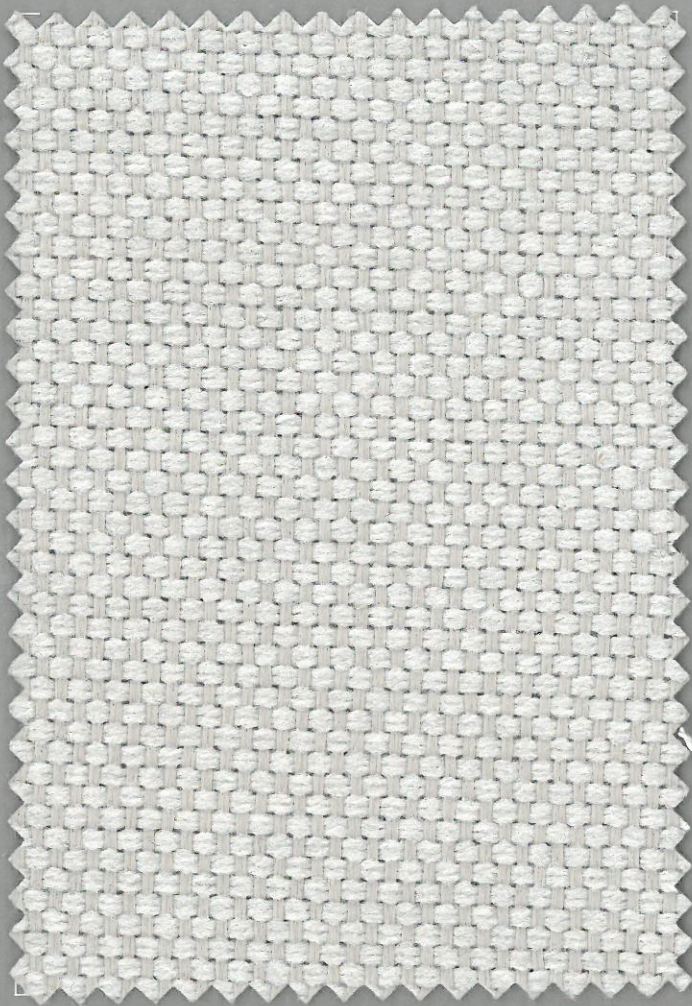
ANCHO/width/largeur : 140 CM

PESO/weight/poids : 390 GR/M2.

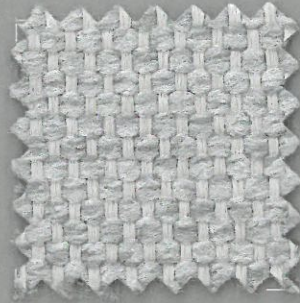
RESISTENCIA A LA ABRASIÓN	CICLOS/cycles/cycles : > 33.000
SOLIDEZ DE LOS COLORES A LA LUZ	5
SOLIDEZ A LA LIMPIEZA EN SECO	5
SOLIDEZ DE LOS COLORES AL LAVADO	4
RESISTENCIA AL PILLING	4-5

INSTRUCCIONES DE LAVADO / Washing Instructions / Instructions de lavage

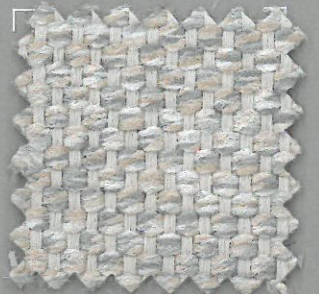




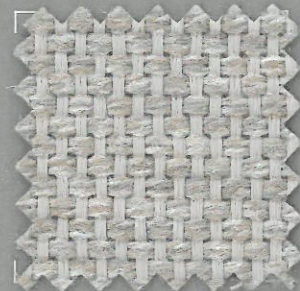
BLANCO



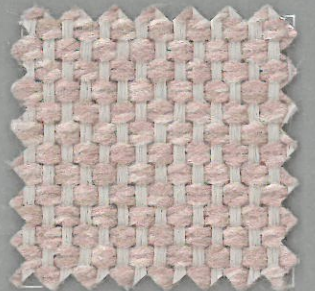
PLATA



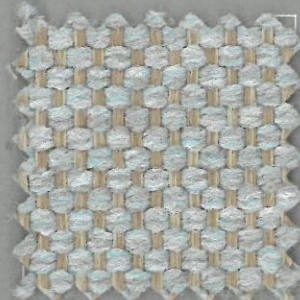
BEIGE



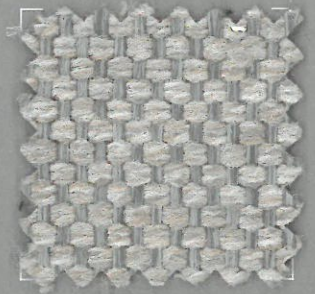
CRUDO



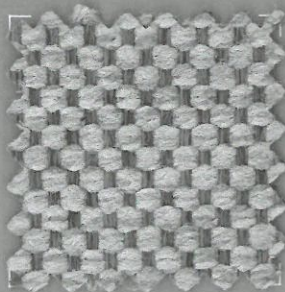
ROSA PALO



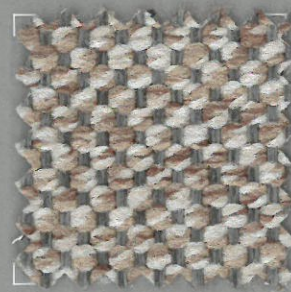
SKY



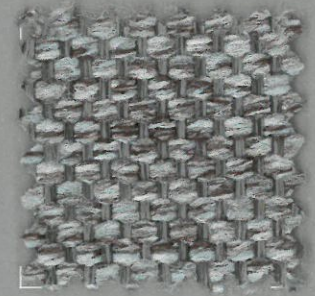
LINO



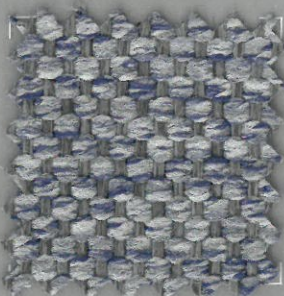
GRIS



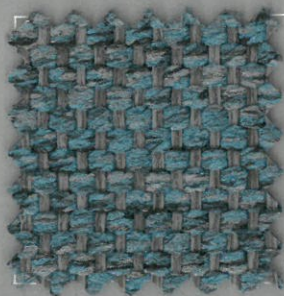
ARENA



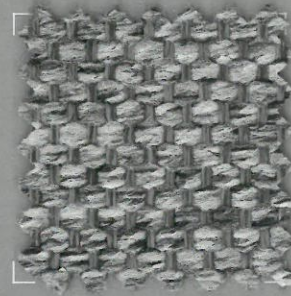
ARTIC



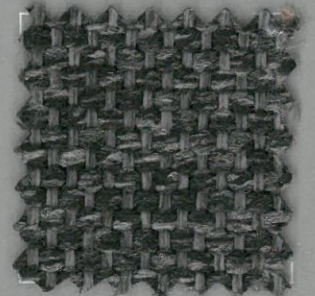
AZUL



TURQUESA



ANTRACITA



CARBON

ESPECIFICACIONES TÉCNICAS

TECHNICAL SPECIFICATIONS
SPÉCIFICATIONS TECHNIQUES

COLECCIÓN/ COLLECTION/ COLLECTION

FIORE

COMPOSICIÓN : 69% POLIESTER + 31% POLIPROPILENO
COMPOSITION : 69% POLYESTER + 31% POLYPROPYLENE
COMPOSITION : 69% POLYESTER + 31% POLYPROPYLENE

ANCHO/width/largeur : 142 +/- 2 CM

PESO/weight/poids : 379 gr./m2

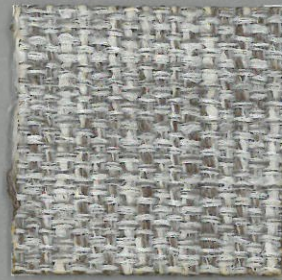
RESISTENCIA DE LAS COSTURAS Seam strength Résistance des coutures	URDIMBRE/warp/chaîne: 8 MM	ISO 13936-2
	TRAMA/weft/trame : 8 MM	ISO 13936-2
RESISTENCIA DE ROTURA AL RASGADO Tear strength Résistance à la déchirure	URDIMBRE/warp/chaîne: 250 N	ISO 13934-1
	TRAMA/weft/trame: 250 N	
RESISTENCIA A LA TRACCIÓN Tensile strength	URDIMBRE/warp/chaîne: 20 N	EN ISO 13934-1
	TRAMA/weft/trame: 20 N	
RESISTENCIA A LA ABRASIÓN Abrasion resistance Résistance à l'abrasion	CICLOS/cycles/cycles : > 50.000	ISO 12947-2
SOLIDEZ DE LOS COLORES A LA LUZ Colour fastness to light Résistance à la lumière	5	TS EN ISO 105-B2
SOLIDEZ A LA LIMPIEZA EN SECO Rubbing solvents Résistance au nettoyage à sec	4	ISO 105-X12
SOLIDEZ DE LOS COLORES AL LAVADO Rubbing fastness in humid state Résistance au nettoyage	4	ISO 105-X12
RESISTENCIA AL PILLING Pilling resistance Résistance au pilling	4-5	ISO 12945-2

INSTRUCCIONES DE LAVADO / Washing Instructions / Instructions de lavage

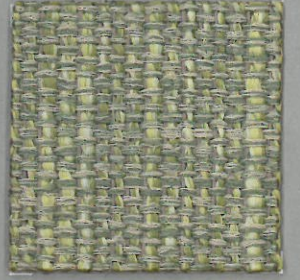




CREAM



SAND



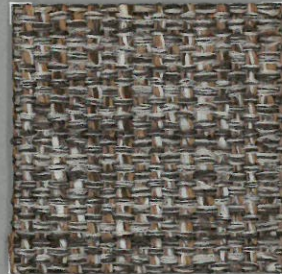
LIMA



CAMEL



WATER GREEN



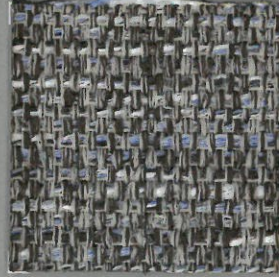
TABAC



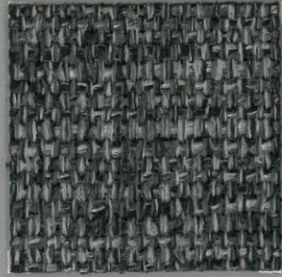
MOUSE



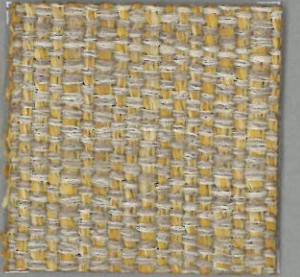
TURCUISE



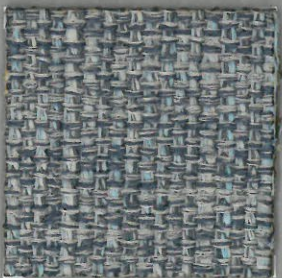
SKYFALL



ANTRACITE



YELLOW



SAFIRA



PINK



ORANGE



RED

ESPECIFICACIONES TÉCNICAS

TECHNICAL SPECIFICATIONS
SPÉCIFICATIONS TECHNIQUES

COLECCIÓN/ COLLECTION/ COLLECTION
GUERNICA

COMPOSICIÓN : 59% POLYESTER + 41% ACETATO
COMPOSITION : 59% POLYESTER + 41% ACETATE
COMPOSITION : 59% POLYESTER + 41% ACETATE

ANCHO/width/largeur : 140 CM

PESO/weight/poids : 495 g/lm (± 5%)

RESISTENCIA DE LAS COSTURAS
Seam strength
Résistance des coutures

URDIMBRE/warp/chaîne: 3,8 MM

TRAMA/weft/trame : 3,6 MM

RESISTENCIA DE ROTURA AL RASGADO
Tear strength
Résistance à la déchirure

URDIMBRE/warp/chaîne: exceed 67 N

TRAMA/weft/trame: 146 N

RESISTENCIA A LA TRACCIÓN
Tensile strength

URDIMBRE/warp/chaîne: exceed 1054 N

TRAMA/weft/trame: 974 N

RESISTENCIA A LA ABRASIÓN
Abrasion resistance
Résistance à l'abrasion

CICLOS/cycles/cycles : > 35.000

SOLIDEZ DE LOS COLORES A LA LUZ
Colour fastness to light
Résistance à la lumière

5

SOLIDEZ A LA LIMPIEZA EN SECO
Rubbing solvents
Résistance au nettoyage à sec

4

SOLIDEZ DE LOS COLORES AL LAVADO
Rubbing fastness in humid state
Résistance au nettoyage

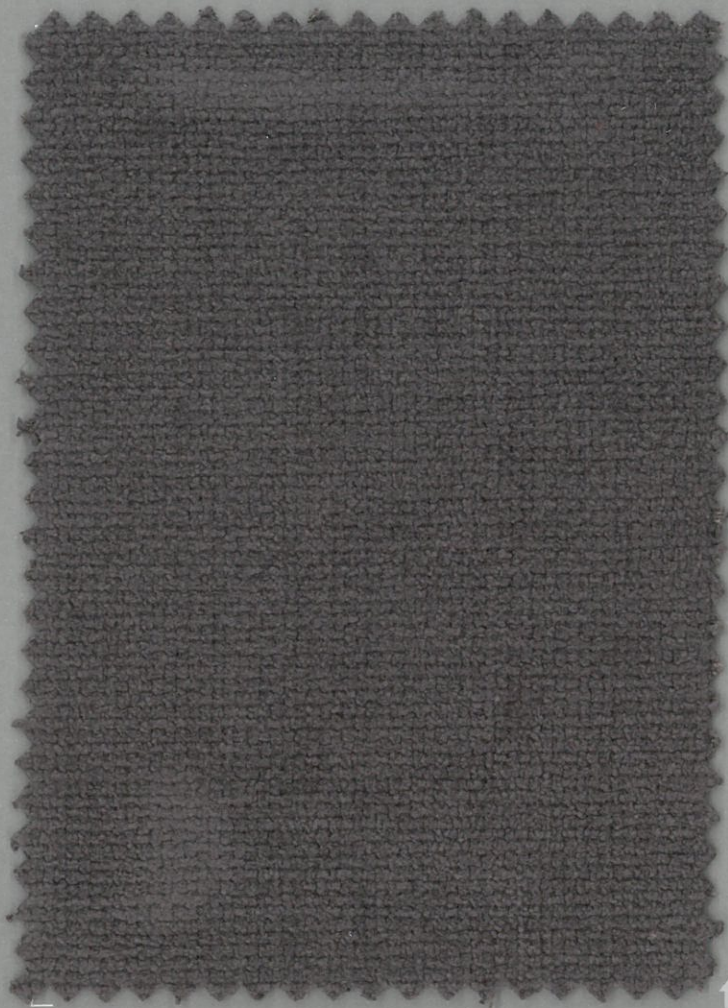
4

RESISTENCIA AL PILLING
Pilling resistance
Résistance au pilling

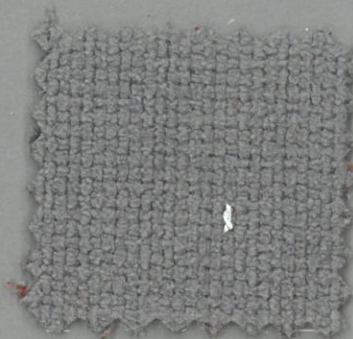
4

INSTRUCCIONES DE LAVADO / Washing Instructions / Instructions de lavage

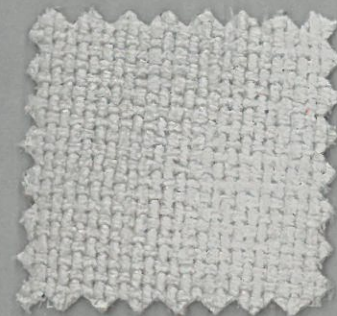




3



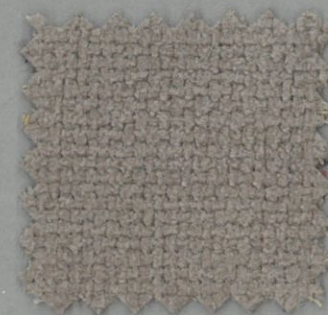
5



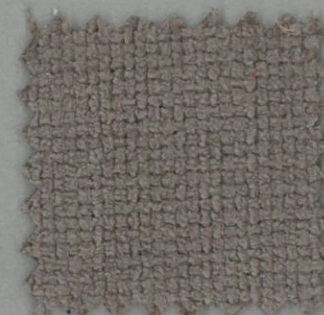
7



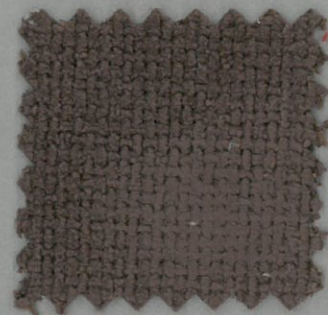
8



12



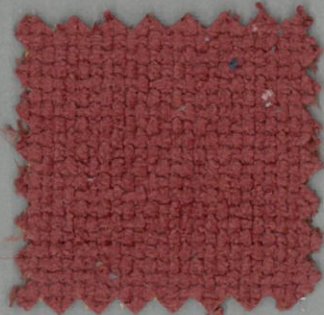
13



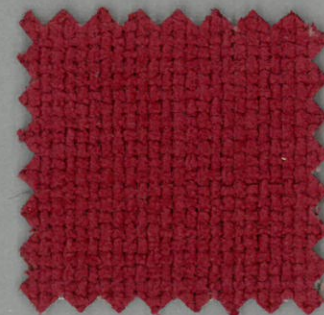
15



17



24



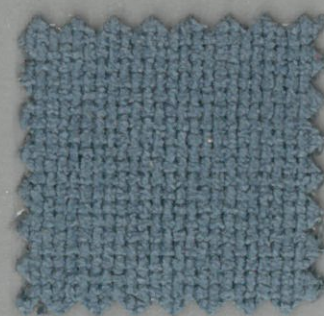
25



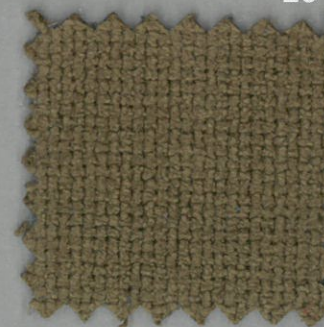
29



32



33



41



42

ESPECIFICACIONES TÉCNICAS

TECHNICAL SPECIFICATIONS
SPÉCIFICATIONS TECHNIQUES

COLECCIÓN/ COLLECTION/ COLLECTION

BEACH

COMPOSICIÓN : 100% PES.
COMPOSITION : 100% PES.
COMPOSITION : :100% PES.

ANCHO/width/largeur : 140 CMS.

PESO/weight/poids : 450 gr./m2 630 gr./ml

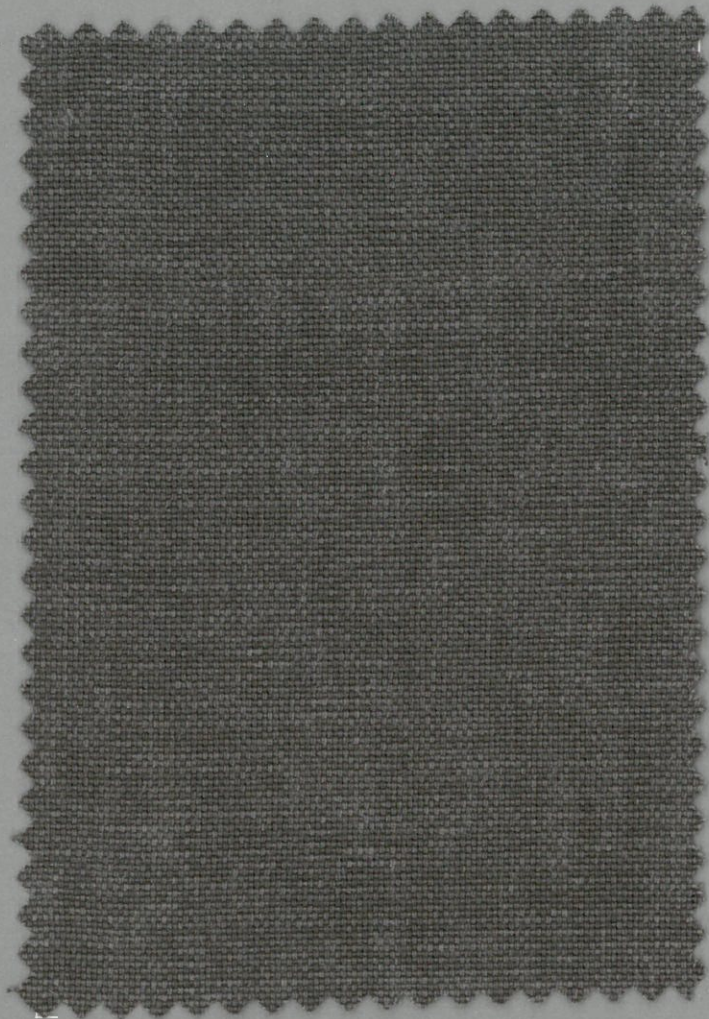
RESISTENCIA DE LAS COSTURAS Seam strength Résistance des coutures	URDIMBRE/warp/chaîne: 3.6 N	BS 3320:1988 ISO 13936-2
	TRAMA/weft/trame : 3.4 N	BS 2543:1995 ISO 13936-2
RESISTENCIA A LA ABRASIÓN Abrasion resistance Résistance à l'abrasion	CICLOS/cycles/cycles : > 100000	ISO 12947-2 1998
SOLIDEZ DE LOS COLORES A LA LUZ Colour fastness to light Résistance à la lumière	5	UNE 40187 BS 1006-B02
SOLIDEZ A LA LIMPIEZA EN SECO Rubbing solvents Résistance au nettoyage à sec	5	ISO 105-D01 UNE 40099
SOLIDEZ DE LOS COLORES AL LAVADO Rubbing fastness in humid state Résistance au nettoyage	5	ISO 105-C06 UNE 40029
RESISTENCIA AL PILLING Pilling resistance Résistance au pilling	5	ISO/DIS 12945-2

INSTRUCCIONES DE LAVADO / Washing Instructions / Instructions de lavage

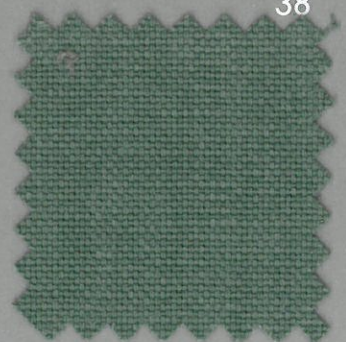
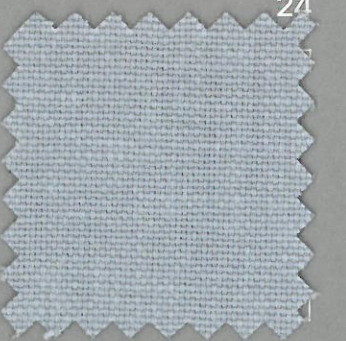
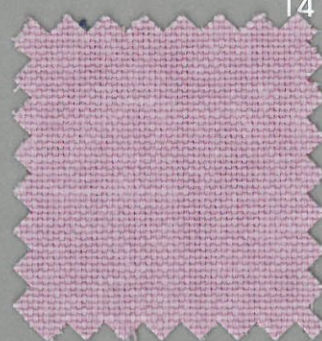
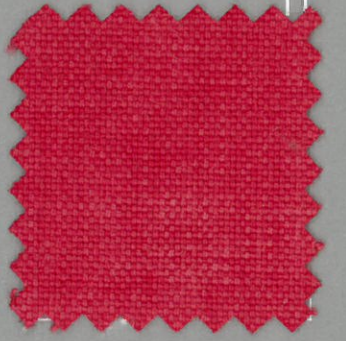
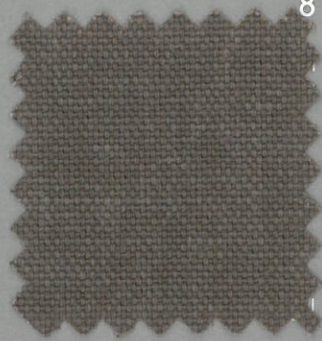
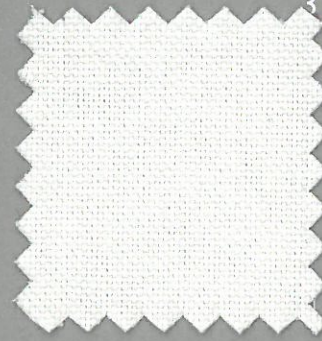
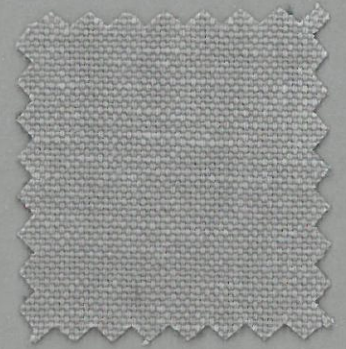
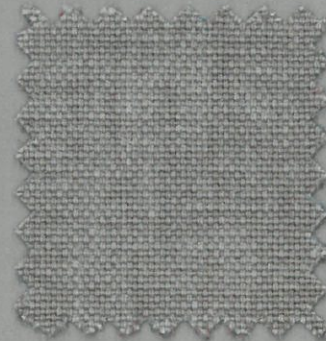


BORN

Serie D



2



39

44

45

5

11

24

38

3

8

14

32



ESPECIFICACIONES TÉCNICAS

TECHNICAL SPECIFICATIONS

SPÉCIFICATIONS TECHNIQUES

COLECCIÓN/ COLLECTION/ COLLECTION

BORN

COMPOSICIÓN : 100 % ALGODÓN

COMPOSITION : 100 % COTTON

COMPOSITION : 100 % COTTON

ANCHO/width/largeur : 140 CM+/- 2 CM

PESO/weight/poids : 406 gr/ ml — 290 gr/m²

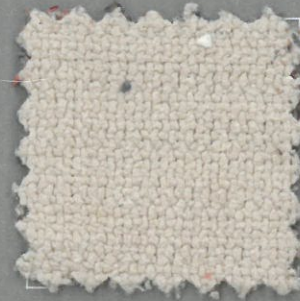
RESISTENCIA DE LAS COSTURAS Seam strength Résistance des coutures	URDIMBRE/warp/chaîne: 6 MM	EN ISO 13936-1
	TRAMA/weft/trame : 6 MM	EN ISO 13936-1
RESISTENCIA DE ROTURA AL RASGADO Tear strength Résistance à la déchirure	URDIMBRE/warp/chaîne: 12,5 N	EN ISO 13934-1
	TRAMA/weft/trame: 9,1 N	EN ISO 13934-1
RESISTENCIA A LA ROTURA Tear strength Résistance à la déchirure	URDIMBRE/warp/chaîne: 803,4 N	EN ISO 13934-1
	TRAMA/weft/trame: 519,3 N	EN ISO 13934-1
RESISTENCIA A LA ABRASIÓN Breaking strength Résistance à l'abrasion	CICLOS/cycles/cycles : > 23.500	EN ISO 12947-1/-2
SOLIDEZ DE LOS COLORES A LA LUZ Colour fastness to light Résistance à la lumière	4-5	EN ISO 105-B 02
SOLIDEZ A LA LIMPIEZA EN SECO Rubbing solvents Résistance au nettoyage à sec	4-5	EN ISO 105-X12
SOLIDEZ DE LOS COLORES AL LAVADO Rubbing fastness in humid state Résistance au nettoyage	4-5	EN ISO 105-X12
RESISTENCIA AL PILLING Pilling resistance Résistance au pilling	4	ISO/DIS 12945-2

INSTRUCCIONES DE LAVADO / Washing Instructions / Instructions de lavage





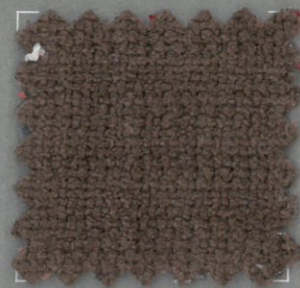
CREMA



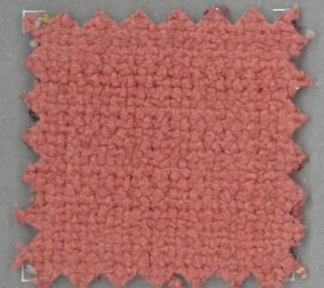
ARENA



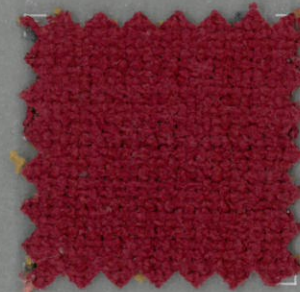
TOSTADO



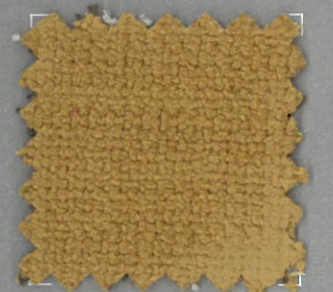
NOGAL



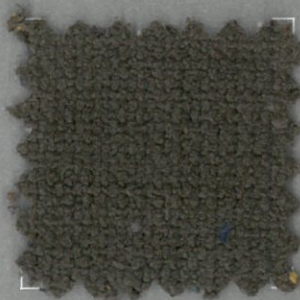
CORAL



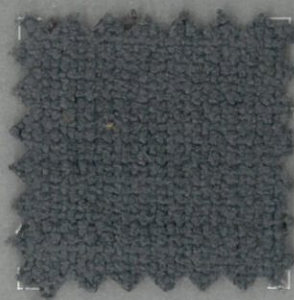
GRANATE



OCRE



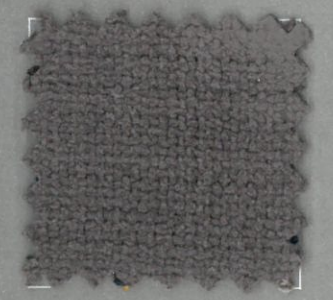
VERDE



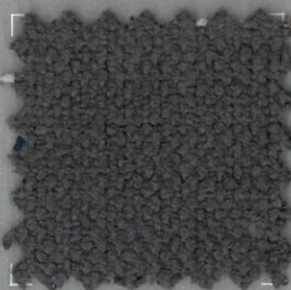
OCEANO



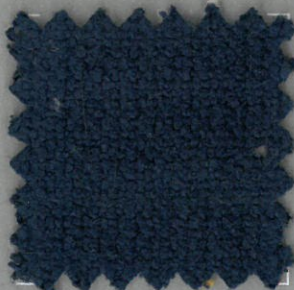
PERLA



MARENGO



ONIX



MARINO



MANGO

MOJITO

ESPECIFICACIONES TÉCNICAS

TECHNICAL SPECIFICATIONS

SPÉCIFICATIONS TECHNIQUES

COLECCIÓN/ COLLECTION/ COLLECTION
CÓDIGO

PESO/weight/poids : 536 gr./m2

RESISTENCIA DE LAS COSTURAS Seam strength Résistance des coutures	URDIMBRE/warp/chaîne: 4 MM TRAMA/weft/trame : 3.4 MM	BS 3320:1988 ISO 13936-2 EN 14465 2003+A1: 2006 EN 13936-2: 2004
RESISTENCIA DE ROTURA AL RASGADO Tear strength Résistance à la déchirure	URDIMBRE/warp/chaîne: 63 N TRAMA/weft/trame: 63 N	EN ISO 13937-3 EN ISO 13937-3
RESISTENCIA A LA ABRASIÓN Breaking strength Résistance à l'abrasion	CICLOS/cycles/cycles : > 100.000	ISO 12947-2 1998
SOLIDEZ DE LOS COLORES A LA LUZ Colour fastness to light Résistance à la lumière	6	EN ISO 105-B02:2014 METODO 2
DETERMINACION DEL POCHAGE Determination "Pochage"	Deformacion máxima : 10.25 MM Maximun deformación Deformacion no recuperada: 6.08 MM Deformación not recovered	EN 14704-2 : 2007
RESISTENCIA AL PILLING Pilling resistance Résistance au pilling	2000 ciclos /cycles : 5 5000 ciclos /cycles : 5 CLASE A/ CLASS A	EN ISO 12945-2: 2000

INSTRUCCIONES DE LAVADO / Washing Instructions / Instructions de lavage



MANCHAS DE LÍQUIDO: Seque la mancha líquida suavemente con un material absorbente (tela, algodón, toalla, etc) Si la mancha persiste, limpiarla con un paño con jabón sin difuminar la mancha, después de cada roce refrescar el paño con jabón limpio para evitar que la suciedad manche el líquido.

MANCHAS SÓLIDAS: Eliminar el exceso de suavidad con cuidado sin difuminar, retire la partícula sólida con una pizca de ayuda de una espátula suave, las manchas restantes deben eliminarse frotando con un paño con jabón con movimientos circulares.

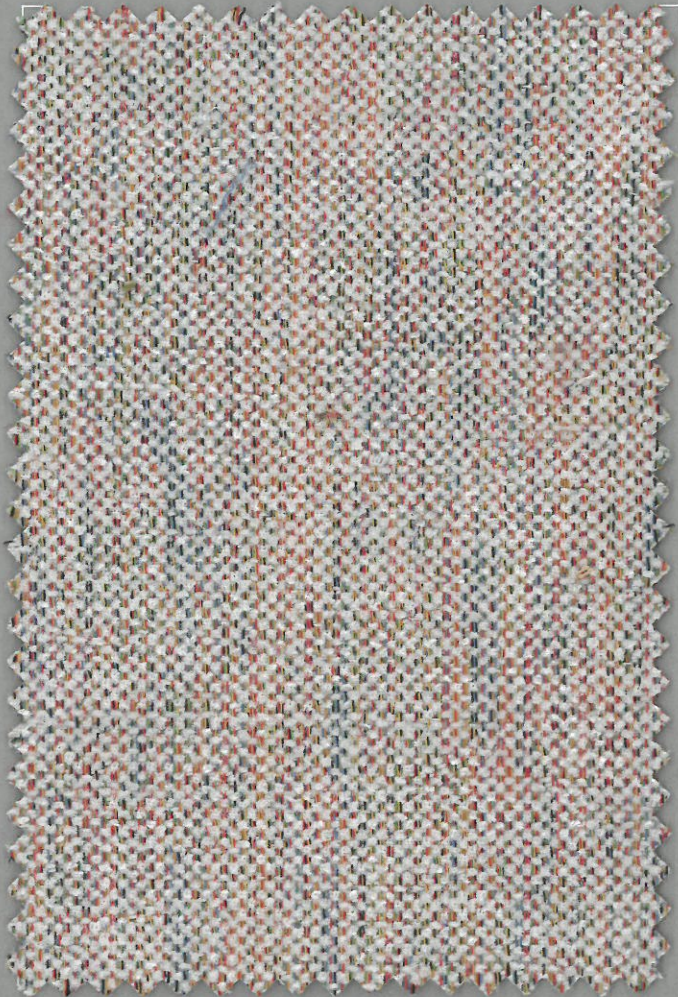
PARA ELIMINAR POLVO: Utilizar la aspiradora o un cepillo suave.

BOLÍGRAFOS Y MANCHAS SIMILARES DIFÍCILES: Humedezca un paño de algodón limpio en una solución de jabón blanco, limpiar la mancha suavemente con el paño húmedo y deje la tela para el secado



CLARA

Serie D



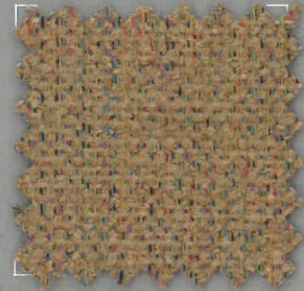
CRUDO



BEIGE



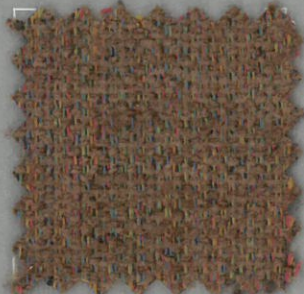
ARENA



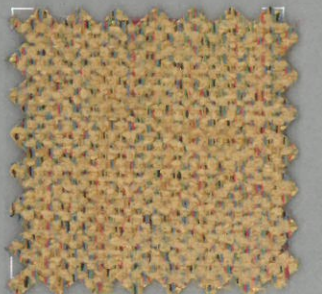
SAND



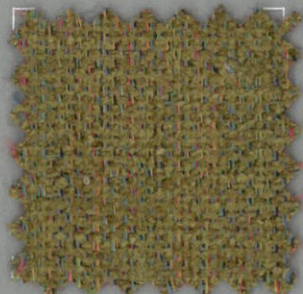
TAUPE



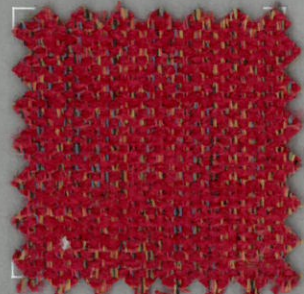
MARRON



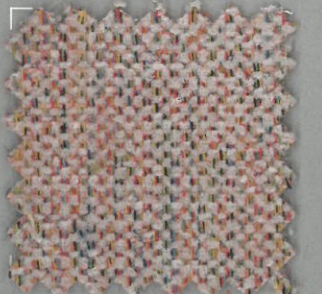
MOSTAZA



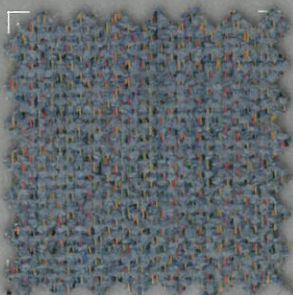
OLIVA



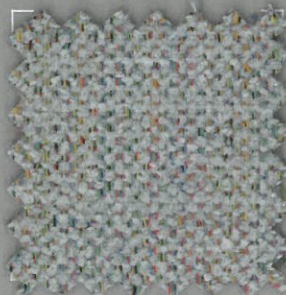
ROJO



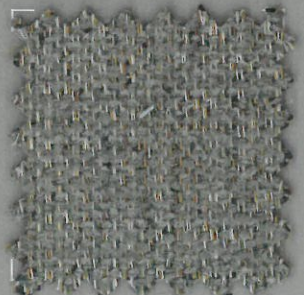
MALVA



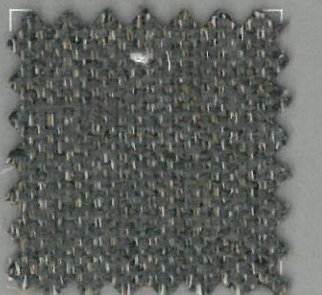
AZUL



SKY



GRIS



PLOMO

ESPECIFICACIONES TÉCNICAS

TECHNICAL SPECIFICATIONS

SPÉCIFICATIONS TECHNIQUES

COLECCIÓN/ COLLECTION/ COLLECTION

CLARA

COMPOSICIÓN : 64% POLIESTER + 36% ACRILICO

COMPOSITION : 64% POLYESTER + 36% ACRYLIC

COMPOSITION : 64% POLYESTER + 36% ACRYLIC

ANCHO/width/largeur : 142 CM +/- 2 CM

PESO/weight/poids : 321 gr./m2

RESISTENCIA DE LAS COSTURAS Seam strength Résistance des coutures	URDIMBRE/warp/chaîne: 8 MM TRAMA/weft/trame : 8 MM	ISO 13936-2 ISO 13936-2
RESISTENCIA DE ROTURA AL RASGADO Tear strength Résistance à la déchirure	URDIMBRE/warp/chaîne: 250 N TRAMA/weft/trame: 250 N	ISO 13934-1 ISO 13934-1
RESISTENCIA A LA TRACCIÓN Tensile strength	URDIMBRE/warp/chaîne: 20 N TRAMA/weft/trame: 20 N	EN ISO 13934-1
RESISTENCIA A LA ABRASIÓN Abrasion resistance Résistance à l'abrasion	CICLOS/cycles/cycles : > 35.000	ISO 12947-2
SOLIDEZ DE LOS COLORES A LA LUZ Colour fastness to light Résistance à la lumière	5	TS EN ISO 105-B2
SOLIDEZ A LA LIMPIEZA EN SECO Rubbing solvents Résistance au nettoyage à sec	4-5	ISO 105-X12
SOLIDEZ DE LOS COLORES AL LAVADO Rubbing fastness in humid state Résistance au nettoyage	5	ISO 105-X12
RESISTENCIA AL PILLING Pilling resistance Résistance au pilling	5	ISO 12945-2

INSTRUCCIONES DE LAVADO / Washing Instructions / Instructions de lavage

